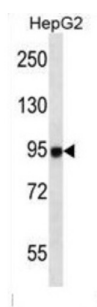
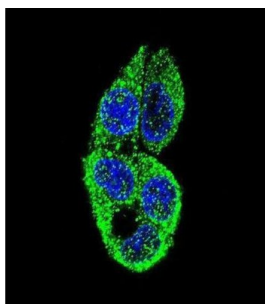


Serine/threonine-Protein Kinase Greatwall (MASTL) Antibody

Catalogue No.: abx025281



This gene encodes a microtubule-associated serine/threonine kinase. Mutations at this locus have been associated with autosomal dominant thrombocytopenia, also known as thrombocytopenia-2. Alternatively spliced transcript variants have been described for this locus.

Target: Serine/threonine-Protein Kinase Greatwall (MASTL)

Clonality: Monoclonal

Reactivity: Human

Tested Applications: ELISA, WB, IF/ICC

Host: Mouse

Recommended dilutions: WB: 1/500 - 1/1000, IF/ICC: 1/10 - 1/50. Optimal dilutions/concentrations should be determined by the end user.

Conjugation: Unconjugated

Immunogen: Human MASTL recombinant protein.

Isotype: IgG₁ Kappa

Form: Liquid

Datasheet

Version: 2.0.0

Revision date: 05 Aug 2025



Purification:	Purified through a protein G column, eluted with high and low pH buffers and neutralized immediately, followed by dialysis against PBS.
Storage:	Aliquot and store at -20°C. Avoid repeated freeze/thaw cycles.
UniProt Primary AC:	Q96GX5 (UniProt , ExPASy)
KEGG:	hsa:84930
String:	9606.ENSP00000365107
Molecular Weight:	Calculated MW: 97.3 kDa
Buffer:	PBS containing 0.09% sodium azide.
Note:	THIS PRODUCT IS FOR RESEARCH USE ONLY. NOT FOR USE IN DIAGNOSTIC, THERAPEUTIC OR COSMETIC PROCEDURES. NOT FOR HUMAN OR ANIMAL CONSUMPTION.

For Reference Only