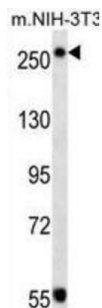
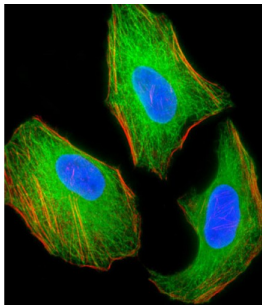


## Tuberous Sclerosis Protein 2 (TSC2) Antibody

Catalogue No.: abx025288



Mutations in this gene lead to tuberous sclerosis complex. Its gene product is believed to be a tumor suppressor and is able to stimulate specific GTPases. The protein associates with hamartin in a cytosolic complex, possibly acting as a chaperone for hamartin. Alternative splicing results in multiple transcript variants encoding different isoforms.

**Target:** Tuberous Sclerosis Protein 2 (TSC2)

**Clonality:** Monoclonal

**Reactivity:** Mouse

**Tested Applications:** ELISA, WB, IF/ICC

**Host:** Mouse

**Recommended dilutions:** WB: 1/100, IF/ICC: 1/10 - 1/50. Optimal dilutions/concentrations should be determined by the end user.

**Conjugation:** Unconjugated

**Immunogen:** Human TSC2 recombinant protein.

**Isotype:** IgG<sub>1</sub> Kappa

**Form:** Liquid

# Datasheet

Version: 3.0.0

Revision date: 09 Sep 2025



<b>Purification:</b>	Purified through a protein G column, eluted with high and low pH buffers and neutralized immediately, followed by dialysis against PBS.
<b>Storage:</b>	Aliquot and store at -20°C. Avoid repeated freeze/thaw cycles.
<b>UniProt Primary AC:</b>	P49815 ( <a href="#">UniProt</a> , <a href="#">ExPASy</a> )
<b>KEGG:</b>	hsa:7249
<b>String:</b>	<a href="#">9606.ENSP00000219476</a>
<b>Molecular Weight:</b>	Calculated MW: 201 kDa
<b>Buffer:</b>	PBS containing 0.09% sodium azide.
<b>Note:</b>	THIS PRODUCT IS FOR RESEARCH USE ONLY. NOT FOR USE IN DIAGNOSTIC, THERAPEUTIC OR COSMETIC PROCEDURES. NOT FOR HUMAN OR ANIMAL CONSUMPTION.

For Reference Only