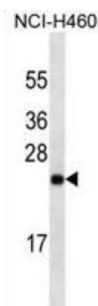


Ubiquitin Carboxyl Terminal Hydrolase L1 (UCHL1) Antibody

Catalogue No.: abx025333



The protein encoded by this gene belongs to the peptidase C12 family. This enzyme is a thiol protease that hydrolyzes a peptide bond at the C-terminal glycine of ubiquitin. This gene is specifically expressed in the neurons and in cells of the diffuse neuroendocrine system. Mutations in this gene may be associated with Parkinson disease.

Target:	Ubiquitin Carboxyl Terminal Hydrolase L1 (UCHL1)
Clonality:	Monoclonal
Reactivity:	Human
Tested Applications:	ELISA, WB
Host:	Mouse
Recommended dilutions:	WB: 1/120 - 1/1000. Optimal dilutions/concentrations should be determined by the end user.
Conjugation:	Unconjugated
Immunogen:	Human UCHL1 recombinant protein.
Isotype:	IgG ₁ , Kappa
Form:	Liquid
Purification:	Purified through a protein G column, eluted with high and low pH buffers and neutralized immediately, followed by dialysis against PBS.
Storage:	Aliquot and store at -20°C. Avoid repeated freeze/thaw cycles.
UniProt Primary AC:	P09936 (UniProt , ExPASy)
KEGG:	hsa:7345

Datasheet

Version: 3.0.0

Revision date: 19 Mar 2025



String: [9606.ENSF00000284440](#)

Molecular Weight: Calculated MW: 24.8 kDa

Buffer: PBS containing 0.09% sodium azide.

Note: THIS PRODUCT IS FOR RESEARCH USE ONLY. NOT FOR USE IN DIAGNOSTIC, THERAPEUTIC OR COSMETIC PROCEDURES. NOT FOR HUMAN OR ANIMAL CONSUMPTION.

For Reference Only