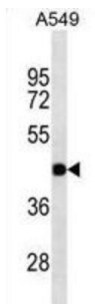


Gap Junction Protein Gamma 2 (GJC2) Antibody

Catalogue No.: abx025370



GJC2 is a gap junction protein. Gap junction proteins are members of a large family of homologous connexins and comprise 4 transmembrane, 2 extracellular, and 3 cytoplasmic domains. This gene plays a key role in central myelination and is involved in peripheral myelination in humans. Defects in this gene are the cause of autosomal recessive Pelizaeus-Merzbacher-like disease-1. This antibody is supplied as crude ascites.

Target:	Gap Junction Protein Gamma 2 (GJC2)
Clonality:	Monoclonal
Reactivity:	Human
Tested Applications:	ELISA, WB
Host:	Mouse
Recommended dilutions:	WB: 1/100 - 1/8000. Optimal dilutions/concentrations should be determined by the end user.
Conjugation:	Unconjugated
Immunogen:	KLH-conjugated synthetic peptide between 53-78 amino acids from the N-terminal region of human GJC2.
Isotype:	IgM
Form:	Liquid
Purification:	Unpurified crude ascites.
Storage:	Aliquot and store at -20°C. Avoid repeated freeze/thaw cycles.
UniProt Primary AC:	Q5T442 (UniProt , ExPASy)
KEGG:	hsa:57165

Datasheet

Version: 3.0.0

Revision date: 26 Jun 2025



String: [9606.ENSPO0000355675](#)

Molecular Weight: Calculated MW: 47 kDa

Buffer: Ascites containing 0.09% sodium azide.

Specificity: Predicted to react with Mouse, Rat, Cow, Pig, Chicken, Hamster, Zebrafish and Xenopus GJC2.

Note: THIS PRODUCT IS FOR RESEARCH USE ONLY. NOT FOR USE IN DIAGNOSTIC, THERAPEUTIC OR COSMETIC PROCEDURES. NOT FOR HUMAN OR ANIMAL CONSUMPTION.

For Reference Only