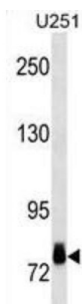


Ribosomal Protein S6 Kinase A3 (RPS6KA3) Antibody

Catalogue No.: abx025381



This gene encodes a member of the RSK (ribosomal S6 kinase) family of serine/threonine kinases. This kinase contains 2 non-identical kinase catalytic domains and phosphorylates various substrates, including members of the mitogen-activated kinase (MAPK) signalling pathway. The activity of this protein has been implicated in controlling cell growth and differentiation. Mutations in this gene have been associated with Coffin-Lowry syndrome (CLS).

Target:	Ribosomal Protein S6 Kinase A3 (RPS6KA3)
Clonality:	Monoclonal
Reactivity:	Human
Tested Applications:	ELISA, WB
Host:	Mouse
Recommended dilutions:	WB: 1/500 - 1/1000. Optimal dilutions/concentrations should be determined by the end user.
Conjugation:	Unconjugated
Immunogen:	Purified His-tagged Human RPS6KA3 protein (Fragment)
Isotype:	IgG ₁
Form:	Liquid
Purification:	Purified Mouse Monoclonal Antibody.
Storage:	Aliquot and store at -20°C. Avoid repeated freeze/thaw cycles.
UniProt Primary AC:	P51812 (UniProt , ExPASy)
KEGG:	hsa:6197

Datasheet

Version: 4.0.0

Revision date: 01 Oct 2025



String: [9606.ENSF00000368884](#)

Molecular Weight: Calculated MW: 83.7 kDa

Buffer: PBS containing 0.09% sodium azide.

Specificity: Predicted to react with Mouse RPS6KA3.

Note: THIS PRODUCT IS FOR RESEARCH USE ONLY. NOT FOR USE IN DIAGNOSTIC, THERAPEUTIC OR COSMETIC PROCEDURES. NOT FOR HUMAN OR ANIMAL CONSUMPTION.

For Reference Only