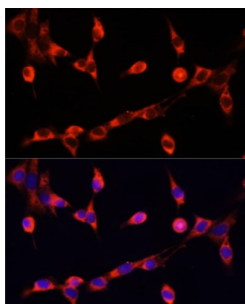
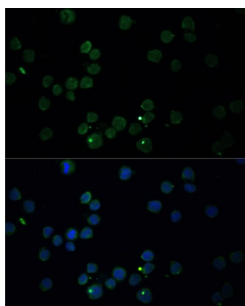


Choline O-Acetyltransferase (CHAT) Antibody

Catalogue No.: abx001939



Immunofluorescence analysis of NIH/3T3 cells using CHAT Antibody (1/100 dilution). Blue: DAPI for nuclear staining.



Immunofluorescence analysis of THP-1 cells using CHAT Antibody (1/100 dilution). Blue: DAPI for nuclear staining.

CHAT Antibody is a Rabbit Polyclonal antibody against CHAT. This gene encodes an enzyme which catalyzes the biosynthesis of the neurotransmitter acetylcholine. This gene product is a characteristic feature of cholinergic neurons, and changes in these neurons may explain some of the symptoms of Alzheimer's disease. Polymorphisms in this gene have been associated with Alzheimer's disease and mild cognitive impairment. Mutations in this gene are associated with congenital myasthenic syndrome associated with episodic apnea. Multiple transcript variants encoding different isoforms have been found for this gene, and some of these variants have been shown to encode more than one isoform.

Target: Choline O-Acetyltransferase (CHAT)

Clonality: Polyclonal

Reactivity: Human, Mouse, Rat

Tested Applications: IF/ICC

Host: Rabbit

Recommended dilutions: IF/ICC: 1/50 - 1/200. Optimal dilutions/concentrations should be determined by the end user.

Conjugation: Unconjugated

Immunogen: Recombinant fusion protein corresponding to human CHAT

Isotype: IgG

Datasheet

Version: 4.0.0
Revision date: 20 Jul 2025



Form:	Liquid
Purification:	Purified by affinity chromatography.
Storage:	Aliquot and store at -20°C. Avoid repeated freeze/thaw cycles.
UniProt Primary AC:	P28329 (UniProt , ExPASy)
Gene Symbol:	CHAT
GeneID:	1103
NCBI Accession:	NP_065574.4
KEGG:	hsa:1103
String:	9606.ENSP00000337103
Buffer:	PBS, pH 7.3, containing 0.02% sodium azide, 50% glycerol.
Concentration:	1 mg/ml
Note:	THIS PRODUCT IS FOR RESEARCH USE ONLY. NOT FOR USE IN DIAGNOSTIC, THERAPEUTIC OR COSMETIC PROCEDURES. NOT FOR HUMAN OR ANIMAL CONSUMPTION.