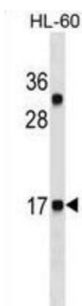


Calcitonin (CALCA) Antibody

Catalogue No.: abx025389



This gene encodes the peptide hormones calcitonin, calcitonin gene-related peptide and katacalcin by tissue-specific alternative RNA splicing of the gene transcripts and cleavage of inactive precursor proteins. Calcitonin is involved in calcium regulation and acts to regulate phosphorus metabolism. Calcitonin gene-related peptide functions as a vasodilator while katacalcin is a calcium-lowering peptide. Multiple transcript variants encoding different isoforms have been found for this gene. This antibody is supplied as crude ascites.

Target: Calcitonin (CALCA)

Clonality: Monoclonal

Reactivity: Human

Tested Applications: ELISA, WB

Host: Mouse

Recommended dilutions: WB: 1/1000 - 1/8000. Optimal dilutions/concentrations should be determined by the end user.

Conjugation: Unconjugated

Immunogen: KLH-conjugated synthetic peptide between 104-132 amino acids from human CALCA/CT.

Isotype: IgM

Form: Liquid

Purification: Unpurified crude ascites.

Storage: Aliquot and store at -20°C. Avoid repeated freeze/thaw cycles.

UniProt Primary AC: P01258 ([UniProt](#), [ExPASy](#))

Datasheet

Version: 3.0.0

Revision date: 24 Jun 2025



Molecular Weight: Calculated MW: 15.5 kDa

Buffer: Ascites containing 0.09% sodium azide.

Note: THIS PRODUCT IS FOR RESEARCH USE ONLY. NOT FOR USE IN DIAGNOSTIC, THERAPEUTIC OR COSMETIC PROCEDURES. NOT FOR HUMAN OR ANIMAL CONSUMPTION.

For Reference Only