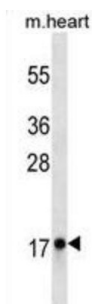


## Myoglobin (MB) Antibody

Catalogue No.: abx025401



This product is currently in development. The lead time for this product may be several months. Please contact us at [info@abbexa.com](mailto:info@abbexa.com) for an updated lead time before purchasing this product.

This gene encodes a member of the globin superfamily and is expressed in skeletal and cardiac muscles. The encoded protein is a haemoprotein contributing to intracellular oxygen storage and transcellular facilitated diffusion of oxygen. At least three alternatively spliced transcript variants encoding the same protein have been reported. This antibody is supplied as crude ascites.

<b>Target:</b>	Myoglobin (MB)
<b>Clonality:</b>	Monoclonal
<b>Reactivity:</b>	Human, Mouse
<b>Tested Applications:</b>	ELISA, WB
<b>Host:</b>	Mouse
<b>Recommended dilutions:</b>	WB: 1/500 - 1/8000. Optimal dilutions/concentrations should be determined by the end user.
<b>Conjugation:</b>	Unconjugated
<b>Immunogen:</b>	KLH-conjugated synthetic peptide between 103-130 amino acids from human Myoglobin.
<b>Isotype:</b>	IgG <sub>1</sub>
<b>Form:</b>	Liquid
<b>Purification:</b>	Unpurified crude ascites.
<b>Storage:</b>	Aliquot and store at -20°C. Avoid repeated freeze/thaw cycles.

# Datasheet

Version: 3.0.0

Revision date: 20 Aug 2025



**UniProt Primary AC:** P02144 ([UniProt](#), [ExPASy](#))

**KEGG:** hsa:4151

**String:** [9606.ENSP00000380489](#)

**Molecular Weight:** Calculated MW: 17.2 kDa

**Buffer:** Ascites containing 0.09% sodium azide.

**Specificity:** Predicted to react with Pig and Monkey MB.

**Note:** THIS PRODUCT IS FOR RESEARCH USE ONLY. NOT FOR USE IN DIAGNOSTIC, THERAPEUTIC OR COSMETIC PROCEDURES. NOT FOR HUMAN OR ANIMAL CONSUMPTION.

For Reference Only