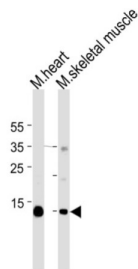


## Myoglobin (MB) Antibody

Catalogue No.: abx025402



This gene encodes a member of the globin superfamily and is expressed in skeletal and cardiac muscles. The encoded protein is a haemoprotein contributing to intracellular oxygen storage and transcellular facilitated diffusion of oxygen. At least three alternatively spliced transcript variants encoding the same protein have been reported.

**Target:** Myoglobin (MB)

**Clonality:** Monoclonal

**Reactivity:** Human, Mouse

**Tested Applications:** ELISA, WB

**Host:** Mouse

**Recommended dilutions:** WB: 1/1000. Optimal dilutions/concentrations should be determined by the end user.

**Conjugation:** Unconjugated

**Immunogen:** KLH-conjugated synthetic peptide between 103-130 amino acids from human Myoglobin.

**Isotype:** IgG<sub>1</sub>

**Form:** Liquid

**Purification:** Purified through a protein G column, eluted with high and low pH buffers and neutralized immediately, followed by dialysis against PBS.

**Storage:** Aliquot and store at -20°C. Avoid repeated freeze/thaw cycles.

**UniProt Primary AC:** P02144 ([UniProt](#), [ExPASy](#))

**KEGG:** hsa:4151

# Datasheet

Version: 3.0.0

Revision date: 20 Aug 2025



**String:** [9606.ENSPO0000380489](#)

**Molecular Weight:** Calculated MW: 17.2 kDa

**Buffer:** PBS containing 0.09% sodium azide.

**Specificity:** Predicted to react with Pig, Horse and Monkey MB.

**Note:** THIS PRODUCT IS FOR RESEARCH USE ONLY. NOT FOR USE IN DIAGNOSTIC, THERAPEUTIC OR COSMETIC PROCEDURES. NOT FOR HUMAN OR ANIMAL CONSUMPTION.

For Reference Only