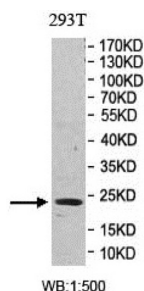
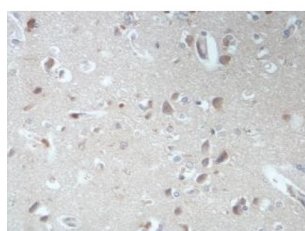


Ras Homolog Gene Family, Member Q (RHOQ) Antibody

Catalogue No.: abx146452



WB analysis of 293T lysates, using RHOQ antibody



IHC analysis of formalin-fixed paraffin-embedded human brain tissue, showing cytoplasmic staining, using RHOQ antibody (1/100 dilution).

RHOQ Antibody is a Rabbit Polyclonal against RHOQ.

| | |
|-------------------------------|------------------------------------------------------------------------------------------------------------------------------------------|
| Target: | Ras Homolog Gene Family, Member Q (RHOQ) |
| Clonality: | Polyclonal |
| Reactivity: | Human |
| Tested Applications: | ELISA, WB, IHC |
| Host: | Rabbit |
| Recommended dilutions: | ELISA: 1/20000 - 1/80000, WB: 1/500 - 1/2000, IHC: 1/100 - 1/200. Optimal dilutions/concentrations should be determined by the end user. |
| Conjugation: | Unconjugated |
| Immunogen: | Recombinant fragment corresponding to 1-104 AA of human RHOQ. |
| Isotype: | IgG |
| Form: | Lyophilized |
| Purification: | Purified by antigen affinity column chromatography. |

Datasheet

Version: 2.0.0

Revision date: 18 Aug 2025



Reconstitution: Reconstitute in 100 µl of sterile distilled H₂O with 50% glycerol.

Storage: Store at -20 °C. Avoid repeated freeze/thaw cycles.

NCBI Accession: BC056154

Buffer: Prior to lyophilization: 1% BSA and 0.02% NaN₃.

Specificity: Predicted to react with Mouse and Rat RHOQ.

Concentration: Lyophilized form: Not applicable.
After reconstitution: 1 mg/ml.

Note: THIS PRODUCT IS FOR RESEARCH USE ONLY. NOT FOR USE IN DIAGNOSTIC, THERAPEUTIC OR COSMETIC PROCEDURES. NOT FOR HUMAN OR ANIMAL CONSUMPTION.

For Reference Only