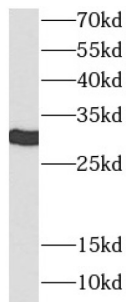
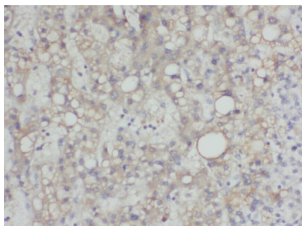


14-3-3 Protein Epsilon (YWHAE) Antibody

Catalogue No.: abx230003



WB analysis of A375 cells, using 14-3-3E antibody (1/2000 dilution).



IHC-P analysis of human lung cancer tissue, using 14-3-3E Antibody (1/200 dilution). Heat-mediated antigen retrieval was carried out with Tris-EDTA buffer, pH 9.

14-3-3 epsilon Antibody is a Rabbit Polyclonal against 14-3-3 epsilon.

Target:	14-3-3 Protein Epsilon (YWHAE)
Clonality:	Polyclonal
Reactivity:	Human, Mouse, Rat
Tested Applications:	ELISA, WB, IHC, IF/ICC, FCM, IP
Host:	Rabbit
Recommended dilutions:	WB: 1/500 - 1/5000, IHC: 1/50 - 1/500, IF/ICC: 1/10 - 1/100, IP: 1/500 - 1/2000. Optimal dilutions/concentrations should be determined by the end user.
Conjugation:	Unconjugated
Immunogen:	tyrosine 3-monooxygenase/tryptophan 5-monooxygenase activation protein, epsilon polypeptide
Isotype:	IgG
Form:	Liquid
Purity:	≥ 95% (SDS-PAGE)

Datasheet

Version: 2.0.0
Revision date: 06 Sep 2025



Purification:	Purified by immunogen affinity chromatography.
Storage:	Aliquot and store at -20°C. Avoid repeated freeze/thaw cycles.
Validity:	12 months.
UniProt Primary AC:	P62258 (UniProt , ExPASy)
Gene Symbol:	YWHAE
GeneID:	7531
OMIM:	605066
HGNC:	12851
KEGG:	hsa:7531
Ensembl:	ENSG00000108953
String:	9606.ENSP00000264335
Molecular Weight:	Observed MW: 30 kDa
Buffer:	PBS, pH 7.3, with 0.02% sodium azide and 50% glycerol.
Concentration:	2 mg/ml
Note:	THIS PRODUCT IS FOR RESEARCH USE ONLY. NOT FOR USE IN DIAGNOSTIC, THERAPEUTIC OR COSMETIC PROCEDURES. NOT FOR HUMAN OR ANIMAL CONSUMPTION.

For Reference Only