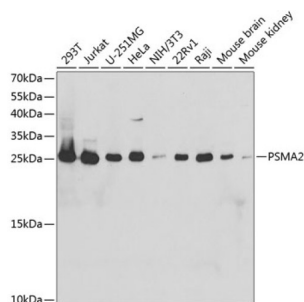
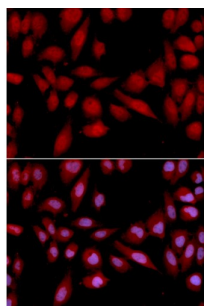


Proteasome Subunit Alpha Type 2 (PSMA2) Antibody

Catalogue No.: abx001947



Western blot analysis of extracts of various cell lines using PSMA2 Antibody (1/1000 dilution).



Immunofluorescence analysis of U2OS cells using PSMA2 Antibody

PSMA2 Antibody is a Rabbit Polyclonal antibody against PSMA2. The proteasome is a multicatalytic proteinase complex with a highly ordered ring-shaped 20S core structure. The core structure is composed of 4 rings of 28 non-identical subunits; 2 rings are composed of 7 alpha subunits and 2 rings are composed of 7 beta subunits. Proteasomes are distributed throughout eukaryotic cells at a high concentration and cleave peptides in an ATP/ubiquitin-dependent process in a non-lysosomal pathway. An essential function of a modified proteasome, the immunoproteasome, is the processing of class I MHC peptides. This gene encodes a member of the peptidase T1A family, that is a 20S core alpha subunit.

Target: Proteasome Subunit Alpha Type 2 (PSMA2)

Clonality: Polyclonal

Reactivity: Human, Mouse, Rat

Tested Applications: WB, IF/ICC

Host: Rabbit

Recommended dilutions: WB: 1/500 - 1/2000, IF/ICC: 1/50 - 1/200. Optimal dilutions/concentrations should be determined by the end user.

Conjugation: Unconjugated

Immunogen: Recombinant fusion protein corresponding to human PSMA2

Isotype: IgG

Datasheet

Version: 5.0.0

Revision date: 20 Aug 2025



Form:	Liquid
Purification:	Purified by affinity chromatography.
Storage:	Aliquot and store at -20°C. Avoid repeated freeze/thaw cycles.
UniProt Primary AC:	P25787 (UniProt , ExPASy)
Gene Symbol:	PSMA2
GeneID:	5683
NCBI Accession:	NP_002778.1
KEGG:	hsa:5683
String:	9606.ENSP00000223321
Molecular Weight:	Calculated MW: 25 kDa Observed MW: 26 kDa
Buffer:	PBS, pH 7.3, containing 0.02% sodium azide, 50% glycerol.
Concentration:	1 mg/ml
Note:	THIS PRODUCT IS FOR RESEARCH USE ONLY. NOT FOR USE IN DIAGNOSTIC, THERAPEUTIC OR COSMETIC PROCEDURES. NOT FOR HUMAN OR ANIMAL CONSUMPTION.