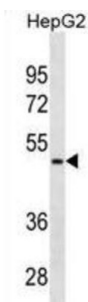


Protein AMBP (AMBP) Antibody

Catalogue No.: abx025476



This gene encodes a complex glycoprotein secreted in plasma. The precursor is proteolytically processed into distinct functioning proteins: alpha-1-microglobulin, which belongs to the superfamily of lipocalin transport proteins and may play a role in the regulation of inflammatory processes, and bikunin, which is a urinary trypsin inhibitor belonging to the superfamily of Kunitz-type protease inhibitors and plays an important role in many physiological and pathological processes. This gene is located on chromosome 9 in a cluster of lipocalin genes. This antibody is supplied as crude ascites.

Target: Protein AMBP (AMBP)

Clonality: Monoclonal

Reactivity: Human

Tested Applications: ELISA, WB

Host: Mouse

Recommended dilutions: WB: 1/500 - 1/1000. Optimal dilutions/concentrations should be determined by the end user.

Conjugation: Unconjugated

Immunogen: KLH-conjugated synthetic peptide between 77-104 amino acids from the N-terminal region of human AMBP.

Isotype: IgG_{2b}

Form: Liquid

Purification: Unpurified crude ascites.

Storage: Aliquot and store at -20°C. Avoid repeated freeze/thaw cycles.

UniProt Primary AC: P02760 ([UniProt](#), [ExPASy](#))

Datasheet

Version: 3.0.0

Revision date: 01 May 2025



KEGG: hsa:259

String: [9606.ENSP00000265132](#)

Molecular Weight: Calculated MW: 39 kDa

Buffer: Ascites containing 0.09% sodium azide.

Note: THIS PRODUCT IS FOR RESEARCH USE ONLY. NOT FOR USE IN DIAGNOSTIC, THERAPEUTIC OR COSMETIC PROCEDURES. NOT FOR HUMAN OR ANIMAL CONSUMPTION.

For Reference Only