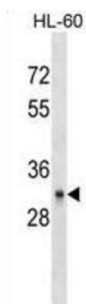


TNF Receptor Superfamily Member 5 / TNFRSF5 (CD40) Antibody

Catalogue No.: abx025477



The protein encoded by this gene is a member of the TNF-receptor superfamily. This receptor has been found to be essential in mediating a broad variety of immune and inflammatory responses including T cell-dependent immunoglobulin class switching, memory B cell development, and germinal center formation. AT-hook transcription factor AKNA is reported to coordinately regulate the expression of this receptor and its ligand, which may be important for homotypic cell interactions. Adaptor protein TNFR2 interacts with this receptor and serves as a mediator of the signal transduction. The interaction of this receptor and its ligand is found to be necessary for amyloid-beta-induced microglial activation, and thus is thought to be an early event in Alzheimer disease pathogenesis. Two alternatively spliced transcript variants of this gene encoding distinct isoforms have been reported. This antibody is supplied as crude ascites.

Target:	TNF Receptor Superfamily Member 5 / TNFRSF5 (CD40)
Clonality:	Monoclonal
Reactivity:	Human
Tested Applications:	ELISA, WB
Host:	Mouse
Recommended dilutions:	WB: 1/100 - 1/1600. Optimal dilutions/concentrations should be determined by the end user.
Conjugation:	Unconjugated
Immunogen:	KLH-conjugated synthetic peptide between 247-276 amino acids from the C-terminal region of human CD40.
Isotype:	IgG ₁
Form:	Liquid
Purification:	Unpurified crude ascites.
Storage:	Aliquot and store at -20°C. Avoid repeated freeze/thaw cycles.

Datasheet

Version: 3.0.0

Revision date: 29 Aug 2025



UniProt Primary AC: P25942 ([UniProt](#), [ExPASy](#))

KEGG: hsa:958

String: [9606.ENSP00000361359](#)

Molecular Weight: Calculated MW: 30.6 kDa

Buffer: Ascites containing 0.09% sodium azide.

Specificity: Predicted to react with Mouse, Pig and Horse CD40.

Note: THIS PRODUCT IS FOR RESEARCH USE ONLY. NOT FOR USE IN DIAGNOSTIC, THERAPEUTIC OR COSMETIC PROCEDURES. NOT FOR HUMAN OR ANIMAL CONSUMPTION.

For Reference Only