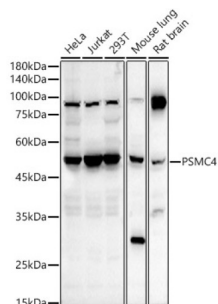
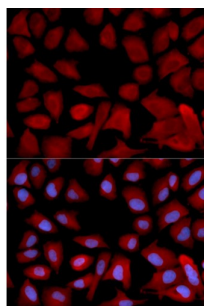


## 26S Proteasome Regulatory Subunit 6B (PSMC4) Antibody

Catalogue No.: abx001948



Western blot analysis of various lysates using PSMC4 Antibody at 1/400 dilution. Secondary antibody: HRP-conjugated Goat anti-Rabbit IgG (H+L) at 1/10000 dilution. Lysates/proteins: 25 µg per lane. Blocking buffer: 3% nonfat dry milk in TBST. Exposure time: 90s.



Western blot analysis of various lysates using PSMC4 Antibody at 1/400 dilution. Secondary antibody: HRP-conjugated Goat anti-Rabbit IgG (H+L) at 1/10000 dilution. Lysates / proteins: 25 µg per lane. Blocking buffer: 3 % nonfat dry milk in TBST. Detection: ECL Basic Kit (RM00020). Exposure time: 10s.

26S Proteasome Regulatory Subunit 6B (PSMC4) Antibody is a Rabbit Polyclonal antibody against 26S Proteasome Regulatory Subunit 6B (PSMC4). The 26S proteasome is a multicatalytic proteinase complex with a highly ordered structure composed of 2 complexes, a 20S core and a 19S regulator. The 20S core is composed of 4 rings of 28 non-identical subunits; 2 rings are composed of 7 alpha subunits and 2 rings are composed of 7 beta subunits. The 19S regulator is composed of a base, which contains 6 ATPase subunits and 2 non-ATPase subunits, and a lid, which contains up to 10 non-ATPase subunits. Proteasomes are distributed throughout eukaryotic cells at a high concentration and cleave peptides in an ATP/ubiquitin-dependent process in a non-lysosomal pathway. This gene encodes a member of the triple-A family of ATPases that is a component of the 19S regulatory subunit and plays a role in 26S proteasome assembly. The encoded protein interacts with gankyrin, a liver oncoprotein, and may also play a role in Parkinson's disease through interactions with synphilin-1. Alternatively spliced transcript variants encoding multiple isoforms have been observed for this gene.

**Target:** 26S Proteasome Regulatory Subunit 6B (PSMC4)

**Clonality:** Polyclonal

**Reactivity:** Human, Mouse, Rat

**Tested Applications:** ELISA, WB, IF/ICC

**Host:** Rabbit

**Recommended dilutions:** ELISA: 1 µg/ml, WB: 1/500 - 1/1000, IF/ICC: 1/50 - 1/200. Optimal dilutions/concentrations should be determined by the end user.

**Conjugation:** Unconjugated

# Datasheet

Version: 6.0.0  
Revision date: 30 Sep 2025



<b>Immunogen:</b>	Recombinant protein corresponding to PSMC4. The exact sequence is proprietary.
<b>Isotype:</b>	IgG
<b>Form:</b>	Liquid
<b>Purification:</b>	Purified by affinity chromatography.
<b>Storage:</b>	Aliquot and store at -20°C. Avoid repeated freeze/thaw cycles.
<b>UniProt Primary AC:</b>	P43686 ( <a href="#">UniProt</a> , <a href="#">ExPASy</a> )
<b>Gene Symbol:</b>	PSMC4
<b>GeneID:</b>	<a href="#">5704</a>
<b>OMIM:</b>	<a href="#">602707</a>
<b>NCBI Accession:</b>	NP_006494.1, NM_006503.3, NP_694546.1, NM_153001.2
<b>HGNC:</b>	9551
<b>KEGG:</b>	hsa:5704
<b>Ensembl:</b>	ENSG00000013275
<b>String:</b>	<a href="#">9606.ENSP00000157812</a>
<b>Molecular Weight:</b>	Calculated MW: 47 kDa Observed MW: 50 kDa
<b>Buffer:</b>	PBS, pH 7.3, containing 0.05% Proclin-300, 50% glycerol.
<b>Concentration:</b>	> 0.2 mg/ml
<b>Note:</b>	THIS PRODUCT IS FOR RESEARCH USE ONLY. NOT FOR USE IN DIAGNOSTIC, THERAPEUTIC OR COSMETIC PROCEDURES. NOT FOR HUMAN OR ANIMAL CONSUMPTION.