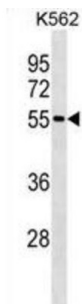


Estrogen Receptor Beta (ESR2) Antibody

Catalogue No.: abx025484



This gene encodes a member of the family of estrogen receptors and superfamily of nuclear receptor transcription factors. The gene product contains an N-terminal DNA binding domain and C-terminal ligand binding domain and is localized to the nucleus, cytoplasm, and mitochondria. Upon binding to 17beta-estradiol or related ligands, the encoded protein forms homo or hetero-dimers that interact with specific DNA sequences to activate transcription. Some isoforms dominantly inhibit the activity of other estrogen receptor family members. Several alternatively spliced transcript variants of this gene have been described, but the full-length nature of some of these variants has not been fully characterized.

Target:	Estrogen Receptor Beta (ESR2)
Clonality:	Monoclonal
Reactivity:	Human
Tested Applications:	ELISA, WB
Host:	Mouse
Recommended dilutions:	WB: 1/500 - 1/1000. Optimal dilutions/concentrations should be determined by the end user.
Conjugation:	Unconjugated
Immunogen:	KLH-conjugated synthetic peptide between 369-397 amino acids from human ESR2.
Isotype:	IgG ₁
Form:	Liquid
Purification:	Purified Mouse Monoclonal Antibody.
Storage:	Aliquot and store at -20°C. Avoid repeated freeze/thaw cycles.
UniProt Primary AC:	Q92731 (UniProt , ExPASy)

Datasheet

Version: 3.0.0

Revision date: 12 Jun 2025



Molecular Weight: Calculated MW: 59.2 kDa

Buffer: PBS containing 0.09% sodium azide.

Specificity: Predicted to react with Rat, Cow, Pig, Chicken and Sheep ESR2.

Note: THIS PRODUCT IS FOR RESEARCH USE ONLY. NOT FOR USE IN DIAGNOSTIC, THERAPEUTIC OR COSMETIC PROCEDURES. NOT FOR HUMAN OR ANIMAL CONSUMPTION.

For Reference Only