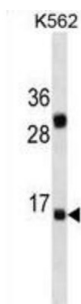


Interleukin 2 (IL2) Antibody

Catalogue No.: abx025487



The protein encoded by this gene is a secreted cytokine that is important for the proliferation of T and B lymphocytes. The receptor of this cytokine is a heterotrimeric protein complex whose gamma chain is also shared by interleukin 4 (IL4) and interleukin 7 (IL7). The expression of this gene in mature thymocytes is monoallelic, which represents an unusual regulatory mode for controlling the precise expression of a single gene. The targeted disruption of a similar gene in mice leads to ulcerative colitis-like disease, which suggests an essential role of this gene in the immune response to antigenic stimuli. This antibody is supplied as crude ascites.

Target: Interleukin 2 (IL2)

Clonality: Monoclonal

Reactivity: Human

Tested Applications: ELISA, WB

Host: Mouse

Recommended dilutions: WB: 1/100 - 1/1600. Optimal dilutions/concentrations should be determined by the end user.

Conjugation: Unconjugated

Immunogen: KLH-conjugated synthetic peptide between 50-77 amino acids from the Central region of human IL2.

Isotype: IgG₁

Form: Liquid

Purification: Unpurified crude ascites.

Storage: Aliquot and store at -20°C. Avoid repeated freeze/thaw cycles.

UniProt Primary AC: P60568 ([UniProt](#), [ExPASy](#))

Datasheet

Version: 1.0.0

Revision date: 07 Sep 2025



KEGG: hsa:3558

String: [9606.ENSP00000226730](#)

Molecular Weight: Calculated MW: 17.6 kDa

Buffer: Ascites containing 0.09% sodium azide.

Note: THIS PRODUCT IS FOR RESEARCH USE ONLY. NOT FOR USE IN DIAGNOSTIC, THERAPEUTIC OR COSMETIC PROCEDURES. NOT FOR HUMAN OR ANIMAL CONSUMPTION.

For Reference Only