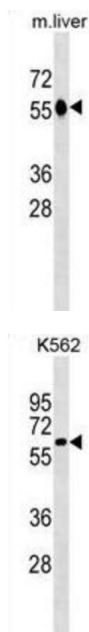


Catalase (CAT) Antibody

Catalogue No.: abx025488



This gene encodes catalase, a key antioxidant enzyme in the body's defense against oxidative stress. Catalase is a heme enzyme that is present in the peroxisome of nearly all aerobic cells. Catalase converts the reactive oxygen species hydrogen peroxide to water and oxygen and thereby mitigates the toxic effects of hydrogen peroxide. Oxidative stress is hypothesized to play a role in the development of many chronic or late-onset diseases such as diabetes, asthma, Alzheimer's disease, systemic lupus erythematosus, rheumatoid arthritis, and cancers. Polymorphisms in this gene have been associated with decreases in catalase activity but, to date, acatalasemia is the only disease known to be caused by this gene. This antibody is supplied as crude ascites.

Target: Catalase (CAT)

Clonality: Monoclonal

Reactivity: Human, Mouse

Tested Applications: ELISA, WB

Host: Mouse

Recommended dilutions: WB: 1/1600. Optimal dilutions/concentrations should be determined by the end user.

Conjugation: Unconjugated

Immunogen: KLH-conjugated synthetic peptide between 152-180 amino acids from the Central region of human CAT.

Datasheet

Version: 2.0.0

Revision date: 21 Jun 2025



Isotype:	IgG _{2a}
Form:	Liquid
Purification:	Unpurified crude ascites.
Storage:	Aliquot and store at -20°C. Avoid repeated freeze/thaw cycles.
UniProt Primary AC:	P04040 (UniProt , ExPASy)
KEGG:	hsa:847
String:	9606.ENSP00000241052
Molecular Weight:	Calculated MW: 59.8 kDa
Buffer:	Ascites containing 0.09% sodium azide.
Specificity:	Predicted to react with Rat, Cow, Pig and Zebrafish CAT.
Note:	THIS PRODUCT IS FOR RESEARCH USE ONLY. NOT FOR USE IN DIAGNOSTIC, THERAPEUTIC OR COSMETIC PROCEDURES. NOT FOR HUMAN OR ANIMAL CONSUMPTION.

For Reference Only