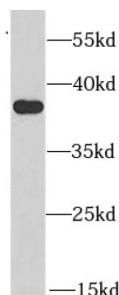
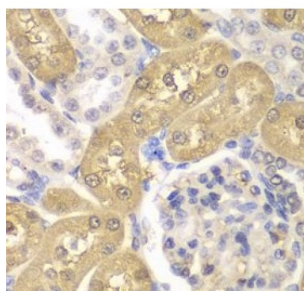


Aldo-Keto Reductase Family 1 Member A1 (AKR1A1) Antibody

Catalogue No.: abx230260



WB analysis of HeLa cells, using AKR1A1 antibody (1/1000 dilution).



IHC-P analysis of rat kidney tissue, using AKR1A1 antibody (1/100 dilution).

Aldo-Keto Reductase Family 1 Member A1 (AKR1A1) Antibody is a Rabbit Polyclonal against Aldo-Keto Reductase Family 1 Member A1 (AKR1A1).

Target: Aldo-Keto Reductase Family 1 Member A1 (AKR1A1)

Clonality: Polyclonal

Reactivity: Human, Mouse, Rat

Tested Applications: ELISA, WB, IHC, IF/ICC

Host: Rabbit

Recommended dilutions: WB: 1/500 - 1/2000, IHC: 1/50 - 1/200, IF/ICC: 1/50 - 1/200. Optimal dilutions/concentrations should be determined by the end user.

Conjugation: Unconjugated

Immunogen: aldo-keto reductase family 1, member A1 (aldehyde reductase)

Isotype: IgG

Form: Liquid

Datasheet

Version: 3.0.0
Revision date: 07 Sep 2025



Purity:	≥ 95% (SDS-PAGE)
Purification:	Purified by immunogen affinity chromatography.
Storage:	Aliquot and store at -20°C. Avoid repeated freeze/thaw cycles.
Validity:	12 months.
UniProt Primary AC:	P14550 (UniProt , ExPASy)
KEGG:	hsa:10327
String:	9606.ENSP00000361140
Molecular Weight:	Observed MW: 37 kDa
Buffer:	PBS, pH 7.3, with 0.02% sodium azide and 50% glycerol.
Concentration:	2 mg/ml
Note:	THIS PRODUCT IS FOR RESEARCH USE ONLY. NOT FOR USE IN DIAGNOSTIC, THERAPEUTIC OR COSMETIC PROCEDURES. NOT FOR HUMAN OR ANIMAL CONSUMPTION.