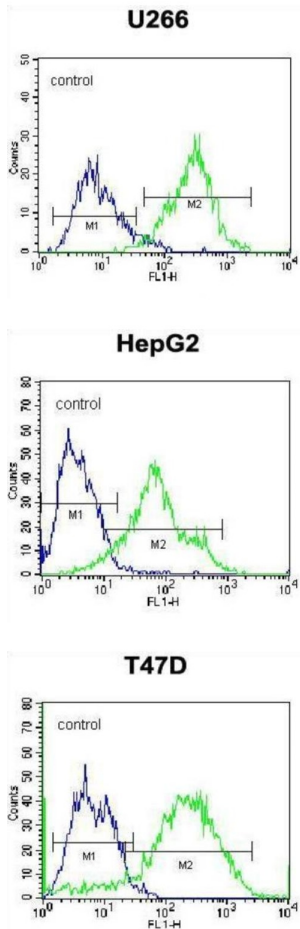


Syndecan 1 (SDC1) Antibody

Catalogue No.: abx025508



The protein encoded by this gene is a transmembrane (type I) heparan sulfate proteoglycan and is a member of the syndecan proteoglycan family. The syndecans mediate cell binding, cell signaling, and cytoskeletal organization and syndecan receptors are required for internalization of the HIV-1 tat protein. The syndecan-1 protein functions as an integral membrane protein and participates in cell proliferation, cell migration and cell-matrix interactions via its receptor for extracellular matrix proteins. Altered syndecan-1 expression has been detected in several different tumor types. While several transcript variants may exist for this gene, the full-length nature of only two have been described to date. These two represent the major variants of this gene and encode the same protein. This antibody is supplied as crude ascites.

Target:	Syndecan 1 (SDC1)
Clonality:	Monoclonal
Reactivity:	Human
Tested Applications:	ELISA, WB, IF/ICC, FCM

Datasheet

Version: 3.0.0
Revision date: 12 Sep 2025



Host: Mouse

Recommended dilutions: WB: 1/500 - 1/8000, IF/ICC: 1/10 - 1/50, FCM: 1/10 - 1/50. Optimal dilutions/concentrations should be determined by the end user.

Conjugation: Unconjugated

Immunogen: KLH-conjugated synthetic peptide between 210-238 amino acids from the C-terminal region of human CD138.

Isotype: IgM

Form: Liquid

Purification: Unpurified crude ascites.

Storage: Aliquot and store at -20°C. Avoid repeated freeze/thaw cycles.

UniProt Primary AC: P18827 ([UniProt](#), [ExPASy](#))

KEGG: hsa:6382

String: [9606.ENSP00000370542](#)

Molecular Weight: Calculated MW: 32.5 kDa

Buffer: Ascites containing 0.09% sodium azide.

Note: THIS PRODUCT IS FOR RESEARCH USE ONLY. NOT FOR USE IN DIAGNOSTIC, THERAPEUTIC OR COSMETIC PROCEDURES. NOT FOR HUMAN OR ANIMAL CONSUMPTION.