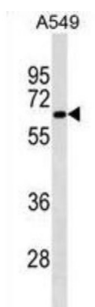
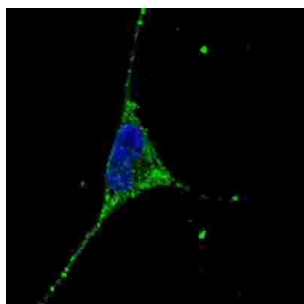


## Podocalyxin (PODXL) Antibody

Catalogue No.: abx025514



This gene encodes a member of the sialomucin protein family. The encoded protein was originally identified as an important component of glomerular podocytes. Podocytes are highly differentiated epithelial cells with interdigitating foot processes covering the outer aspect of the glomerular basement membrane. Other biological activities of the encoded protein include: binding in a membrane protein complex with Na<sup>+</sup>/H<sup>+</sup> exchanger regulatory factor to intracellular cytoskeletal elements, playing a role in hematopoietic cell differentiation, and being expressed in vascular endothelium cells and binding to L-selectin. This antibody is supplied as crude ascites.

**Target:** Podocalyxin (PODXL)

**Clonality:** Monoclonal

**Reactivity:** Human

**Tested Applications:** ELISA, WB, IF/ICC

**Host:** Mouse

**Recommended dilutions:** WB: 1/16000, IF/ICC: 1/100. Optimal dilutions/concentrations should be determined by the end user.

**Conjugation:** Unconjugated

**Immunogen:** KLH-conjugated synthetic peptide between 410-439 amino acids from the C-terminal region of human PODXL.

**Isotype:** IgG<sub>1</sub>

# Datasheet

Version: 2.0.0

Revision date: 21 Aug 2025



|                            |  |
|----------------------------|--|
| <b>Form:</b>               | Liquid   |
| <b>Purification:</b>       | Unpurified crude ascites.  |
| <b>Storage:</b>            | Aliquot and store at -20°C. Avoid repeated freeze/thaw cycles.   |
| <b>UniProt Primary AC:</b> | O00592 ( <a href="#">UniProt</a> , <a href="#">ExPASy</a> )  |
| <b>KEGG:</b>               | hsa:5420   |
| <b>String:</b>             | <a href="#">9606.ENSP00000367817</a>   |
| <b>Molecular Weight:</b>   | Calculated MW: 58.6 kDa  |
| <b>Buffer:</b>             | Ascites containing 0.09% sodium azide.   |
| <b>Note:</b>               | THIS PRODUCT IS FOR RESEARCH USE ONLY. NOT FOR USE IN DIAGNOSTIC, THERAPEUTIC OR COSMETIC PROCEDURES. NOT FOR HUMAN OR ANIMAL CONSUMPTION. |

For Reference Only