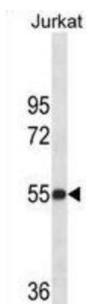


Protein-Lysine 6-Oxidase (LOX) Antibody

Catalogue No.: abx025523



This product is currently in development. The lead time for this product may be several months. Please contact us at info@abbexa.com for an updated lead time before purchasing this product.

The protein encoded by this gene is an extracellular copper enzyme that initiates the crosslinking of collagens and elastin. The enzyme catalyzes oxidative deamination of the epsilon-amino group in certain lysine and hydroxylysine residues of collagens and lysine residues of elastin. In addition to crosslinking extracellular matrix proteins, the encoded protein may have a role in tumor suppression. Defects in this gene are a cause of autosomal recessive cutis laxa type I (CL type I). Two transcript variants encoding different isoforms have been found for this gene. This antibody is supplied as crude ascites.

Target:	Protein-Lysine 6-Oxidase (LOX)
Clonality:	Monoclonal
Reactivity:	Human
Tested Applications:	ELISA, WB
Host:	Mouse
Recommended dilutions:	WB: 1/200 - 1/1600. Optimal dilutions/concentrations should be determined by the end user.
Conjugation:	Unconjugated
Immunogen:	KLH-conjugated synthetic peptide between 234-260 amino acids from the Central region of human LOX.
Isotype:	IgG _{2b}
Form:	Liquid
Purification:	Unpurified crude ascites.
Storage:	Aliquot and store at -20°C. Avoid repeated freeze/thaw cycles.

Datasheet

Version: 4.0.0

Revision date: 29 Sep 2025



UniProt Primary AC: P28300 ([UniProt](#), [ExPASy](#))

KEGG: hsa:4015

String: [9606.ENSP00000231004](#)

Molecular Weight: Calculated MW: 46.9 kDa

Buffer: Ascites containing 0.09% sodium azide.

Specificity: Predicted to react with Mouse, Rat and Pig LOX.

Note: THIS PRODUCT IS FOR RESEARCH USE ONLY. NOT FOR USE IN DIAGNOSTIC, THERAPEUTIC OR COSMETIC PROCEDURES. NOT FOR HUMAN OR ANIMAL CONSUMPTION.

For Reference Only