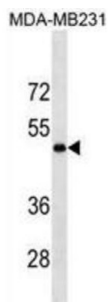


## Protein-Lysine 6-Oxidase (LOX) Antibody

Catalogue No.: abx025524



The protein encoded by this gene is an extracellular copper enzyme that initiates the crosslinking of collagens and elastin. The enzyme catalyzes oxidative deamination of the epsilon-amino group in certain lysine and hydroxylysine residues of collagens and lysine residues of elastin. In addition to crosslinking extracellular matrix proteins, the encoded protein may have a role in tumor suppression. Defects in this gene are a cause of autosomal recessive cutis laxa type I (CL type I). Two transcript variants encoding different isoforms have been found for this gene.

<b>Target:</b>	Protein-Lysine 6-Oxidase (LOX)
<b>Clonality:</b>	Monoclonal
<b>Reactivity:</b>	Human
<b>Tested Applications:</b>	ELISA, WB
<b>Host:</b>	Mouse
<b>Recommended dilutions:</b>	WB: 1/500 - 1/1000. Optimal dilutions/concentrations should be determined by the end user.
<b>Conjugation:</b>	Unconjugated
<b>Immunogen:</b>	KLH-conjugated synthetic peptide between 234-260 amino acids from the Central region of human LOX.
<b>Isotype:</b>	IgG <sub>2b</sub>
<b>Form:</b>	Liquid
<b>Purification:</b>	Purified through a protein G column, eluted with high and low pH buffers and neutralized immediately, followed by dialysis against PBS.
<b>Storage:</b>	Aliquot and store at -20°C. Avoid repeated freeze/thaw cycles.
<b>UniProt Primary AC:</b>	P28300 ( <a href="#">UniProt</a> , <a href="#">ExPASy</a> )

# Datasheet

Version: 3.0.0

Revision date: 19 Jul 2025



**KEGG:** hsa:4015

**String:** [9606.ENSP00000231004](#)

**Molecular Weight:** Calculated MW: 46.9 kDa

**Buffer:** PBS containing 0.09% sodium azide.

**Specificity:** Predicted to react with Mouse, Rat and Pig LOX.

**Note:** THIS PRODUCT IS FOR RESEARCH USE ONLY. NOT FOR USE IN DIAGNOSTIC, THERAPEUTIC OR COSMETIC PROCEDURES. NOT FOR HUMAN OR ANIMAL CONSUMPTION.

For Reference Only