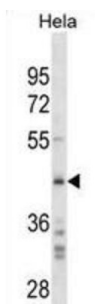


SPARC (SPARC) Antibody

Catalogue No.: abx025530



Secreted protein acidic and rich in cysteine/osteonectin/BM40, or SPARC, is a matrix-associated protein that elicits changes in cell shape, inhibits cell-cycle progression, and influences the synthesis of extracellular matrix (ECM) (Bradshaw et al., 2003 [PubMed 12721366]). This antibody is supplied as crude ascites.

Target: SPARC (SPARC)

Clonality: Monoclonal

Reactivity: Human

Tested Applications: ELISA, WB

Host: Mouse

Recommended dilutions: WB: 1/500 - 1/1000. Optimal dilutions/concentrations should be determined by the end user.

Conjugation: Unconjugated

Immunogen: KLH-conjugated synthetic peptide between 224-251 amino acids from the C-terminal region of human SPARC.

Isotype: IgG₁

Form: Liquid

Purification: Unpurified crude ascites.

Storage: Aliquot and store at -20°C. Avoid repeated freeze/thaw cycles.

UniProt Primary AC: P09486 ([UniProt](#), [ExPASy](#))

Gene Symbol: SPARC

Datasheet

Version: 2.0.0

Revision date: 09 Sep 2025



KEGG: hsa:6678

String: [9606.ENSP00000231061](#)

Molecular Weight: Calculated MW: 34.6 kDa

Buffer: Ascites containing 0.09% sodium azide.

Specificity: Predicted to react with Mouse, Rat, Cow, Pig, Chicken, Rabbit and Xenopus SPARC.

Note: THIS PRODUCT IS FOR RESEARCH USE ONLY. NOT FOR USE IN DIAGNOSTIC, THERAPEUTIC OR COSMETIC PROCEDURES. NOT FOR HUMAN OR ANIMAL CONSUMPTION.

For Reference Only