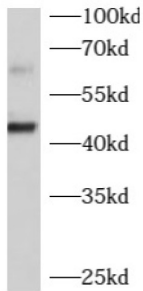
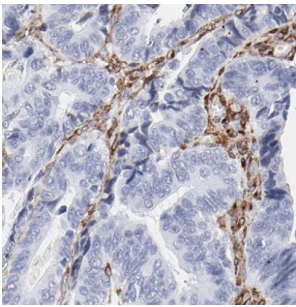


## Beta-1,4-Galactosyltransferase 2 (B4GALT2) Antibody

Catalogue No.: abx230773



WB analysis of PC-3 cells, using B4GALT2 antibody (1/1000 dilution).



IHC-P analysis of human colon cancer tissue, using B4GALT2 antibody (1/100 dilution).

B4GALT2 Antibody is a Rabbit Polyclonal against B4GALT2.

**Target:** Beta-1,4-Galactosyltransferase 2 (B4GALT2)

**Clonality:** Polyclonal

**Reactivity:** Human, Mouse, Rat

**Tested Applications:** ELISA, WB, IHC

**Host:** Rabbit

**Recommended dilutions:** WB: 1/500 - 1/2000, IHC: 1/20 - 1/200. Optimal dilutions/concentrations should be determined by the end user.

**Conjugation:** Unconjugated

**Immunogen:** UDP-Gal:betaGlcNAc beta 1, 4-galactosyltransferase, polypeptide 2

**Isotype:** IgG

**Form:** Liquid

**Purity:** ≥ 95% (SDS-PAGE)

# Datasheet

Version: 2.0.0  
Revision date: 21 Jun 2025



<b>Purification:</b>	Purified by immunogen affinity chromatography.
<b>Storage:</b>	Aliquot and store at -20°C. Avoid repeated freeze/thaw cycles.
<b>Validity:</b>	12 months.
<b>UniProt Primary AC:</b>	O60909 ( <a href="#">UniProt</a> , <a href="#">ExPASy</a> )
<b>Gene Symbol:</b>	B4GALT2
<b>GeneID:</b>	<a href="#">8704</a>
<b>OMIM:</b>	<a href="#">604013</a>
<b>HGNC:</b>	925
<b>KEGG:</b>	hsa:8704
<b>Ensembl:</b>	ENSG00000117411
<b>String:</b>	<a href="#">9606.ENSP00000310696</a>
<b>Molecular Weight:</b>	Observed MW: 42-45 kDa
<b>Buffer:</b>	PBS, pH 7.3, with 0.02% sodium azide and 50% glycerol.
<b>Concentration:</b>	2 mg/ml
<b>Note:</b>	THIS PRODUCT IS FOR RESEARCH USE ONLY. NOT FOR USE IN DIAGNOSTIC, THERAPEUTIC OR COSMETIC PROCEDURES. NOT FOR HUMAN OR ANIMAL CONSUMPTION.

For Reference Only