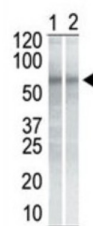


Serine/threonine-Protein Kinase Chk1 (CHK1) Antibody

Catalogue No.: abx025544



CHK1 Antibody is a Mouse Monoclonal antibody against CHK1.

Target: Serine/threonine-Protein Kinase Chk1 (CHK1)

Clonality: Monoclonal

Reactivity: Human, Mouse

Tested Applications: ELISA, WB

Host: Mouse

Recommended dilutions: WB: 1/1000 - 1/2000. Optimal dilutions/concentrations should be determined by the end user.

Conjugation: Unconjugated

Immunogen: Ni-NTA purified recombinant protein CHK1 expressed in E. coli strain M15.

Isotype: IgM

Form: Liquid

Purification: Purified through a protein G column, eluted with high and low pH buffers and neutralized immediately, followed by dialysis against PBS.

Storage: Aliquot and store at -20°C. Avoid repeated freeze/thaw cycles.

UniProt Primary AC: O14757 ([UniProt](#), [ExPASy](#))

NCBI Accession: NP_001107593.1, NP_001107594.1, NP_001231775.1, NP_001265.2

KEGG: hsa:1111

Datasheet

Version: 3.0.0

Revision date: 06 Mar 2025



String: [9606.ENSF00000388648](#)

Molecular Weight: Calculated MW: 54.4 kDa

Buffer: PBS containing 0.09% sodium azide.

Note: THIS PRODUCT IS FOR RESEARCH USE ONLY. NOT FOR USE IN DIAGNOSTIC, THERAPEUTIC OR COSMETIC PROCEDURES. NOT FOR HUMAN OR ANIMAL CONSUMPTION.

For Reference Only