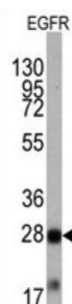
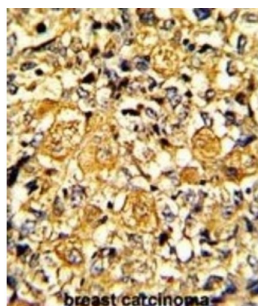
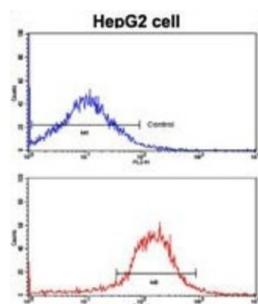


Epidermal Growth Factor Receptor (EGFR) Antibody

Catalogue No.: abx025550



The protein encoded by this gene is a transmembrane glycoprotein that is a member of the protein kinase superfamily. This protein is a receptor for members of the epidermal growth factor family. EGFR is a cell surface protein that binds to epidermal growth factor. Binding of the protein to a ligand induces receptor dimerization and tyrosine autophosphorylation and leads to cell proliferation. Mutations in this gene are associated with lung cancer. Multiple alternatively spliced transcript variants that encode different protein isoforms have been found for this gene.

Target: Epidermal Growth Factor Receptor (EGFR)

Clonality: Monoclonal

Reactivity: Human

Tested Applications: ELISA, WB, IHC, FCM

Host: Mouse

Datasheet

Version: 2.0.0
Revision date: 20 Jul 2025



Recommended dilutions: WB: 1/2000, IHC-P: 1/25, FCM: 1/25. Not tested in IHC-F. Optimal dilutions/concentrations should be determined by the end user.

Conjugation: Unconjugated

Immunogen: Purified His-tagged Human EGFR protein (Fragment)

Isotype: IgG, Kappa

Form: Liquid

Purification: Purified through a protein G column, eluted with high and low pH buffers and neutralized immediately, followed by dialysis against PBS.

Storage: Aliquot and store at -20°C. Avoid repeated freeze/thaw cycles.

UniProt Primary AC: P00533 ([UniProt](#), [ExPASy](#))

NCBI Accession: NP_005219.2, NP_958439.1, NP_958440.1, NP_958441.1

KEGG: hsa:1956

String: [9606.ENSP00000275493](#)

Molecular Weight: Calculated MW: 134 kDa

Buffer: PBS containing 0.09% sodium azide.

Note: THIS PRODUCT IS FOR RESEARCH USE ONLY. NOT FOR USE IN DIAGNOSTIC, THERAPEUTIC OR COSMETIC PROCEDURES. NOT FOR HUMAN OR ANIMAL CONSUMPTION.