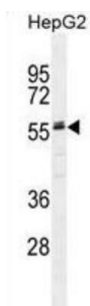
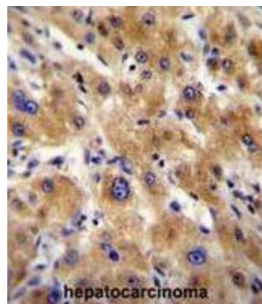
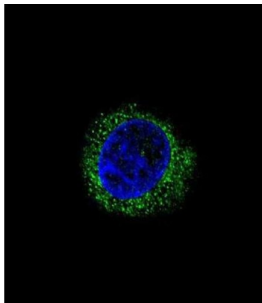


Alpha-2-HS-Glycoprotein (AHSG) Antibody

Catalogue No.: abx025591



Alpha2-HS glycoprotein (AHSG), a glycoprotein present in the serum, is synthesized by hepatocytes. The AHSG molecule consists of two polypeptide chains, which are both cleaved from a proprotein encoded from a single mRNA. It is involved in several functions, such as endocytosis, brain development and the formation of bone tissue. The protein is commonly present in the cortical plate of the immature cerebral cortex and bone marrow hemopoietic matrix, and it has therefore been postulated that it participates in the development of the tissues. However, its exact significance is still obscure.

Target: Alpha-2-HS-Glycoprotein (AHSG)

Clonality: Polyclonal

Reactivity: Human

Tested Applications: ELISA, WB, IHC, IF/ICC, FCM

Host: Rabbit

Datasheet

Version: 3.0.0
Revision date: 21 Jun 2025



Recommended dilutions:	WB: 1/1000, IHC-P: 1/25, IF/ICC: 1/25, FCM: 1/25. Not tested in IHC-F. Optimal dilutions/concentrations should be determined by the end user.
Conjugation:	Unconjugated
Immunogen:	KLH-conjugated synthetic peptide between 247-276 amino acids from the C-terminal region of human AHSG.
Isotype:	IgG
Form:	Liquid
Purification:	Purified through a protein A column, followed by peptide affinity purification.
Storage:	Aliquot and store at -20°C. Avoid repeated freeze/thaw cycles.
UniProt Primary AC:	P02765 (UniProt , ExPASy)
Gene Symbol:	AHSG
KEGG:	hsa:197
String:	9606.ENSP00000393887
Molecular Weight:	Calculated MW: 39.3 kDa
Buffer:	PBS containing 0.09% sodium azide.
Note:	THIS PRODUCT IS FOR RESEARCH USE ONLY. NOT FOR USE IN DIAGNOSTIC, THERAPEUTIC OR COSMETIC PROCEDURES. NOT FOR HUMAN OR ANIMAL CONSUMPTION.