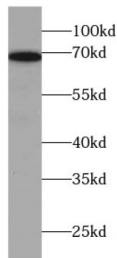
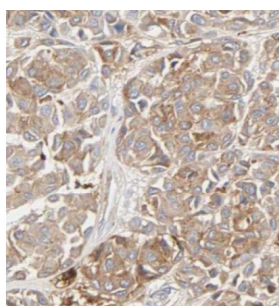


# Transient Receptor Potential Cation Channel Subfamily V Member 6 (Trpv6) Antibody

Catalogue No.: abx231300



WB analysis of mouse liver tissue, using SLC7A1 antibody (1/800 dilution).



IHC-P analysis of human osteosarcoma tissue, using SLC7A1 antibody (1/100 dilution).

Transient Receptor Potential Cation Channel Subfamily V Member 6 (Trpv6) Antibody is a Rabbit Polyclonal against Transient Receptor Potential Cation Channel Subfamily V Member 6 (Trpv6)

**Target:** Transient Receptor Potential Cation Channel Subfamily V Member 6 (Trpv6)

**Clonality:** Polyclonal

**Reactivity:** Human, Mouse, Rat

**Tested Applications:** ELISA, WB, IHC

**Host:** Rabbit

**Recommended dilutions:** WB: 1/500 - 1/2000, IHC: 1/20 - 1/200. Optimal dilutions/concentrations should be determined by the end user.

**Conjugation:** Unconjugated

**Immunogen:** solute carrier family 7 (cationic amino acid transporter, y+ system) , member 1

**Isotype:** IgG

**Form:** Liquid

# Datasheet

Version: 3.0.0  
Revision date: 19 Aug 2025



<b>Purity:</b>	≥ 95% (SDS-PAGE)
<b>Purification:</b>	Purified by immunogen affinity chromatography.
<b>Storage:</b>	Aliquot and store at -20°C. Avoid repeated freeze/thaw cycles.
<b>Validity:</b>	12 months.
<b>UniProt Primary AC:</b>	P30825 ( <a href="#">UniProt</a> , <a href="#">ExPASy</a> )
<b>Gene Symbol:</b>	SLC7A1
<b>GeneID:</b>	<a href="#">6541</a>
<b>KEGG:</b>	hsa:6541
<b>String:</b>	<a href="#">9606.ENSP00000370128</a>
<b>Molecular Weight:</b>	Observed MW: 70 kDa
<b>Buffer:</b>	PBS, pH 7.3, with 0.02% sodium azide and 50% glycerol.
<b>Concentration:</b>	2 mg/ml
<b>Note:</b>	THIS PRODUCT IS FOR RESEARCH USE ONLY. NOT FOR USE IN DIAGNOSTIC, THERAPEUTIC OR COSMETIC PROCEDURES. NOT FOR HUMAN OR ANIMAL CONSUMPTION.