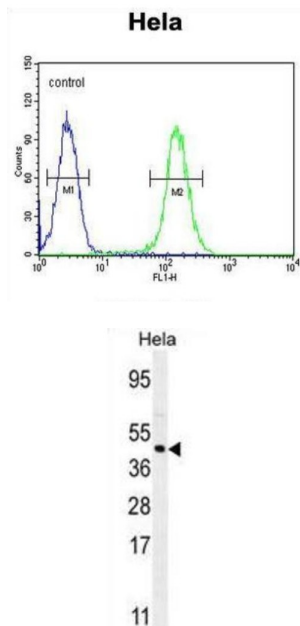


Forkhead Box Protein L2 (FOXL2) Antibody

Catalogue No.: abx025615



This gene encodes a forkhead transcription factor. The protein contains a fork-head DNA-binding domain and may play a role in ovarian development and function. Mutations in this gene are a cause of blepharophimosis syndrome and premature ovarian failure 3.

Target:	Forkhead Box Protein L2 (FOXL2)
Clonality:	Polyclonal
Reactivity:	Human
Tested Applications:	ELISA, WB, FCM
Host:	Rabbit
Recommended dilutions:	WB: 1/1000, FCM: 1/10 - 1/50. Optimal dilutions/concentrations should be determined by the end user.
Conjugation:	Unconjugated
Immunogen:	KLH-conjugated synthetic peptide between 3-29 amino acids from the N-terminal region of human FOXL2.
Isotype:	IgG
Form:	Liquid

Datasheet

Version: 3.0.0
Revision date: 17 Jul 2025



Purification:	Purified through a protein A column, followed by peptide affinity purification.
Storage:	Aliquot and store at -20°C. Avoid repeated freeze/thaw cycles.
UniProt Primary AC:	P58012 (UniProt , ExPASy)
KEGG:	hsa:668
String:	9606.ENSP00000333188
Molecular Weight:	Calculated MW: 38.8 kDa
Buffer:	PBS containing 0.09% sodium azide.
Note:	THIS PRODUCT IS FOR RESEARCH USE ONLY. NOT FOR USE IN DIAGNOSTIC, THERAPEUTIC OR COSMETIC PROCEDURES. NOT FOR HUMAN OR ANIMAL CONSUMPTION.

For Reference Only