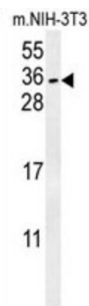
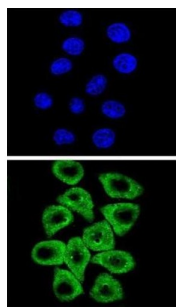


Cbp/P300-Interacting Transactivator 2 (CITED2) Antibody

Catalogue No.: abx025619



The protein encoded by this gene inhibits transactivation of HIF1A-induced genes by competing with binding of HIF1a to p300-CH1. Mutations in this gene are a cause of cardiac septal defects. Three transcript variants encoding the same protein have been found for this gene.

Target: Cbp/P300-Interacting Transactivator 2 (CITED2)

Clonality: Polyclonal

Reactivity: Human, Mouse

Tested Applications: ELISA, WB, IF/ICC

Host: Rabbit

Recommended dilutions: WB: 1/1000, IF/ICC: 1/10 - 1/50. Optimal dilutions/concentrations should be determined by the end user.

Conjugation: Unconjugated

Immunogen: KLH-conjugated synthetic peptide between 200-226 amino acids from the C-terminal region of human CITED2.

Isotype: IgG

Form: Liquid

Datasheet

Version: 3.0.0
Revision date: 10 Oct 2025



Purification:	Purified through a protein A column, followed by peptide affinity purification.
Storage:	Aliquot and store at -20°C. Avoid repeated freeze/thaw cycles.
UniProt Primary AC:	Q99967 (UniProt , ExPASy)
Gene Symbol:	CITED2
KEGG:	hsa:10370
String:	9606.ENSP00000444198
Molecular Weight:	Calculated MW: 28.5 kDa
Buffer:	PBS containing 0.09% sodium azide.
Specificity:	Predicted to react with Cow CITED2.
Note:	THIS PRODUCT IS FOR RESEARCH USE ONLY. NOT FOR USE IN DIAGNOSTIC, THERAPEUTIC OR COSMETIC PROCEDURES. NOT FOR HUMAN OR ANIMAL CONSUMPTION.

For Reference Only