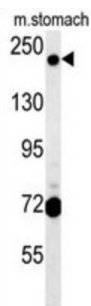
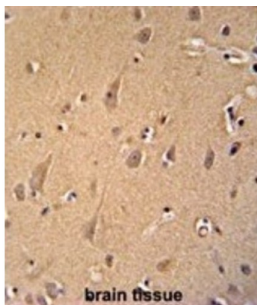


GRIP And Coiled-Coil Domain-Containing Protein 2 (GCC2) Antibody

Catalogue No.: abx025632



The protein encoded by this gene is a peripheral membrane protein localized to the trans-Golgi network. It is sensitive to brefeldin A. This encoded protein contains a GRIP domain which is thought to be used in targeting. Alternative splicing results in multiple transcript variants.

Target:	GRIP And Coiled-Coil Domain-Containing Protein 2 (GCC2)
Clonality:	Polyclonal
Reactivity:	Human, Mouse
Tested Applications:	ELISA, WB, IHC
Host:	Rabbit
Recommended dilutions:	WB: 1/1000, IHC-P: 1/50 - 1/100. Not tested in IHC-F. Optimal dilutions/concentrations should be determined by the end user.
Conjugation:	Unconjugated
Immunogen:	KLH-conjugated synthetic peptide between 1581-1609 amino acids from the C-terminal region of human GCC2.
Isotype:	IgG
Form:	Liquid

Datasheet

Version: 4.0.0
Revision date: 19 Jun 2025



Purification:	Purified through a protein A column, followed by peptide affinity purification.
Storage:	Aliquot and store at -20°C. Avoid repeated freeze/thaw cycles.
UniProt Primary AC:	Q8IWJ2 (UniProt , ExPASy)
Gene Symbol:	GCC2
KEGG:	hsa:9648
String:	9606.ENSP00000307939
Molecular Weight:	Calculated MW: 196 kDa
Buffer:	PBS containing 0.09% sodium azide.
Specificity:	Predicted to react with Rat GCC2.
Note:	THIS PRODUCT IS FOR RESEARCH USE ONLY. NOT FOR USE IN DIAGNOSTIC, THERAPEUTIC OR COSMETIC PROCEDURES. NOT FOR HUMAN OR ANIMAL CONSUMPTION.

For Reference Only