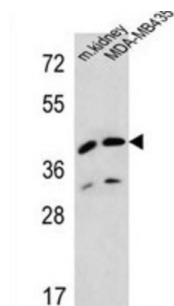


L-2-Hydroxyglutarate Dehydrogenase, Mitochondrial (L2HGDH) Antibody

Catalogue No.: abx025654



WB analysis of Mouse kidney tissue and MDA-MB435 cell lysates (35 ug/lane) using L-2-Hydroxyglutarate Dehydrogenase, Mitochondrial (L2HGDH) antibody. L2HGDH detection is shown by the arrow.

L-2-Hydroxyglutarate Dehydrogenase, Mitochondrial (L2HGDH) antibody is a Rabbit polyclonal antibody against L-2-Hydroxyglutarate Dehydrogenase, Mitochondrial (L2HGDH).

This gene encodes L-2-Hydroxyglutarate Dehydrogenase, Mitochondrial, a FAD-dependent enzyme that oxidizes L-2-hydroxyglutarate to alpha-ketoglutarate in a variety of mammalian tissues. Mutations in this gene cause L-2-hydroxyglutaric aciduria, a rare autosomal recessive neurometabolic disorder resulting in moderate to severe intellectual disabilities.

Target:	L-2-Hydroxyglutarate Dehydrogenase, Mitochondrial (L2HGDH)
Research Area:	Enzymes and Kinases
Clonality:	Polyclonal
Reactivity:	Human, Mouse
Tested Applications:	ELISA, WB
Host:	Rabbit
Recommended dilutions:	WB: 1/1000. Optimal dilutions/concentrations should be determined by the end user.
Conjugation:	Unconjugated
Immunogen:	KLH-conjugated synthetic peptide between 132-159 amino acids from the Central region of Human L2HGDH.
Isotype:	IgG
Form:	Liquid
Purification:	Purified through a protein A column, followed by peptide affinity purification.

Datasheet

Version: 3.0.0

Revision date: 09 Oct 2025



Storage: Aliquot and store at -20°C. Avoid repeated freeze/thaw cycles.

UniProt Primary AC: Q9H9P8 ([UniProt](#), [ExPASy](#))

Gene Symbol: L2HGDH

String: [9606.ENSP00000267436](#)

Molecular Weight: Calculated MW: 50.3 kDa

Buffer: PBS containing 0.09% sodium azide.

Concentration: 0.5 mg/ml

Note: THIS PRODUCT IS FOR RESEARCH USE ONLY. NOT FOR USE IN DIAGNOSTIC, THERAPEUTIC OR COSMETIC PROCEDURES. NOT FOR HUMAN OR ANIMAL CONSUMPTION.

For Reference Only