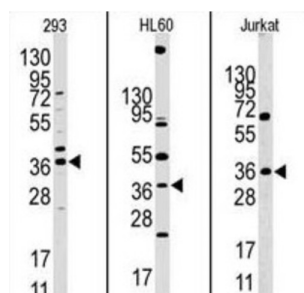


Hypoxia Inducible Factor 1 Alpha Inhibitor (HIF1AN) Antibody

Catalogue No.: abx025670



HIF1 Encoded protein (factor inhibiting HIF-1) is a co-repressor that interacts with hypoxia-inducible factor 1 (HIF-1) alpha and the von Hippel-Lindau tumor suppressor protein to mediate repression of HIF-1 transcriptional activity.

Target:	Hypoxia Inducible Factor 1 Alpha Inhibitor (HIF1AN)
Clonality:	Polyclonal
Reactivity:	Human
Tested Applications:	ELISA, WB
Host:	Rabbit
Recommended dilutions:	WB: 1/1000. Optimal dilutions/concentrations should be determined by the end user.
Conjugation:	Unconjugated
Immunogen:	KLH-conjugated synthetic peptide between 23-54 amino acids from the N-terminal region of human HIF1AN.
Isotype:	IgG
Form:	Liquid
Purification:	Purified through a protein A column, eluted with high and low pH buffers and neutralized immediately, followed by dialysis against PBS.
Storage:	Aliquot and store at -20°C. Avoid repeated freeze/thaw cycles.
UniProt Primary AC:	Q9NWT6 (UniProt , ExPASy)
String:	9606.ENSP00000299163

Datasheet

Version: 3.0.0

Revision date: 21 Jun 2025



Enzyme Commission Number: EC 1.14.11.30, EC 1.14.11.n4

Molecular Weight: Calculated MW: 40.3 kDa

Buffer: PBS containing 0.09% sodium azide.

Note: THIS PRODUCT IS FOR RESEARCH USE ONLY. NOT FOR USE IN DIAGNOSTIC, THERAPEUTIC OR COSMETIC PROCEDURES. NOT FOR HUMAN OR ANIMAL CONSUMPTION.

For Reference Only