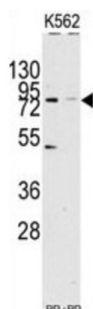


F-Box And Leucine-Rich Repeat Protein 11 (KDM2A) Antibody

Catalogue No.: abx025717



JHDM1a/FBXL11 is a member of the F-box protein family which is characterized by an approximately 40 amino acid motif, the F-box. The F-box proteins constitute one of the four subunits of ubiquitin protein ligase complex called SCFs (SKP1-cullin-F-box), which function in phosphorylation-dependent ubiquitination. The F-box proteins are divided into 3 classes: Fbws containing WD-40 domains, Fbls containing leucine-rich repeats, and Fbxs containing either different protein-protein interaction modules or no recognizable motifs. JHDM1a/FBXL11 belongs to the Fbls class and, in addition to an F-box, contains at least 6 highly degenerated leucine-rich repeats.

Target:	F-Box And Leucine-Rich Repeat Protein 11 (KDM2A)
Clonality:	Polyclonal
Reactivity:	Human
Tested Applications:	ELISA, WB
Host:	Rabbit
Recommended dilutions:	WB: 1/1000. Optimal dilutions/concentrations should be determined by the end user.
Conjugation:	Unconjugated
Immunogen:	KLH-conjugated synthetic peptide between 867-896 amino acids from the C-terminal region of human JHDM1a/FBXL11.
Isotype:	IgG
Form:	Liquid
Purification:	Purified Rabbit Polyclonal Antibody.
Storage:	Aliquot and store at -20°C. Avoid repeated freeze/thaw cycles.
UniProt Primary AC:	Q9Y2K7 (UniProt , ExPASy)

Datasheet

Version: 4.0.0

Revision date: 05 Jun 2025



String: [9606.ENSF00000432786](#)

Molecular Weight: Calculated MW: 133 kDa

Buffer: PBS containing 0.09% sodium azide.

Specificity: Predicted to react with Mouse KDM2A.

Note: THIS PRODUCT IS FOR RESEARCH USE ONLY. NOT FOR USE IN DIAGNOSTIC, THERAPEUTIC OR COSMETIC PROCEDURES. NOT FOR HUMAN OR ANIMAL CONSUMPTION.

For Reference Only