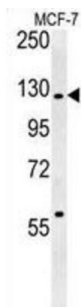
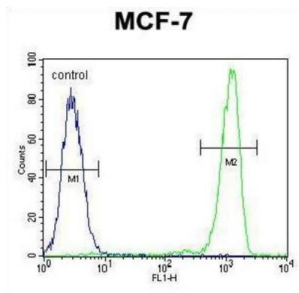


Rab GTPase-Activating Protein 1 (RABGAP1) Antibody

Catalogue No.: abx025727



Western blot analysis of MCF-7 cell lysates (35 µg per lane) using Rab GTPase-Activating Protein 1 Antibody.



Flow cytometric analysis of MCF-7 cell lysates (right histogram) compared to a negative control cell (left histogram) using Rab GTPase-Activating Protein 1 Antibody, followed by FITC-conjugated secondary antibodies.

RABGAP1 may act as a GTPase-activating protein of RAB6A and play a role in microtubule nucleation by centrosome. It may participate in a RAB6A-mediated pathway involved in the metaphase-anaphase transition.

Target: Rab GTPase-Activating Protein 1 (RABGAP1)

Clonality: Polyclonal

Reactivity: Human

Tested Applications: ELISA, WB, FCM

Host: Rabbit

Recommended dilutions: WB: 1/1000, FCM: 1/10 - 1/50. Optimal dilutions/concentrations should be determined by the end user.

Conjugation: Unconjugated

Immunogen: KLH-conjugated synthetic peptide between 14-43 amino acids from the N-terminal region of human RABGAP1.

Isotype: IgG

Form: Liquid

Datasheet

Version: 5.0.0
Revision date: 02 Oct 2025



| | |
|----------------------------|--|
| Purification: | Purified through a protein A column, followed by peptide affinity purification. |
| Storage: | Aliquot and store at -20°C. Avoid repeated freeze/thaw cycles. |
| UniProt Primary AC: | Q9Y3P9 (UniProt , ExPASy) |
| Gene Symbol: | RABGAP1 |
| String: | 9606.ENSP00000362751 |
| Molecular Weight: | Calculated MW: 122 kDa |
| Buffer: | PBS containing 0.09% sodium azide. |
| Specificity: | Predicted to react with Mouse RABGAP1. |
| Concentration: | 0.5 mg/ml |
| Note: | THIS PRODUCT IS FOR RESEARCH USE ONLY. NOT FOR USE IN DIAGNOSTIC, THERAPEUTIC OR COSMETIC PROCEDURES. NOT FOR HUMAN OR ANIMAL CONSUMPTION. |

For Reference Only