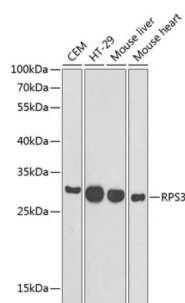
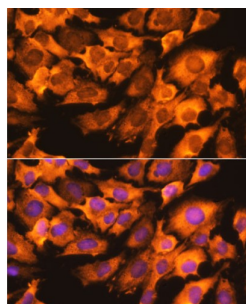


40S Ribosomal Protein S3 (RPS3) Antibody

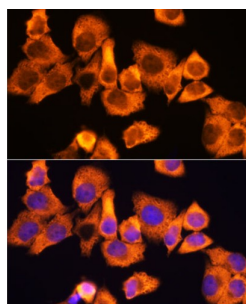
Catalogue No.: abx001973



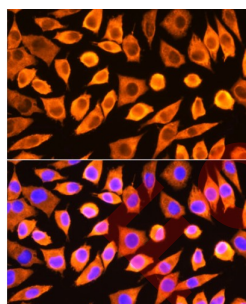
Western blot analysis of extracts of various cell lines using RPS3 Antibody (1/1000 dilution).



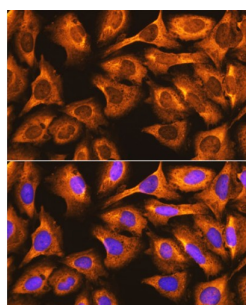
Immunofluorescence analysis of C6 cells using RPS3 Antibody (1/100 dilution). Blue: DAPI for nuclear staining.



Immunofluorescence analysis of HeLa cells using RPS3 Antibody (1/100 dilution). Blue: DAPI for nuclear staining.



Immunofluorescence analysis of L929 cells using RPS3 Antibody (1/100 dilution). Blue: DAPI for nuclear staining.



Immunofluorescence analysis of U-2 OS cells using RPS3 Antibody (1/100 dilution). Blue: DAPI for nuclear staining.

Datasheet

Version: 4.0.0
Revision date: 01 Oct 2025



RPS3 Antibody is a Rabbit Polyclonal antibody against RPS3. Ribosomes, the organelles that catalyze protein synthesis, consist of a small 40S subunit and a large 60S subunit. Together these subunits are composed of 4 RNA species and approximately 80 structurally distinct proteins. This gene encodes a ribosomal protein that is a component of the 40S subunit, where it forms part of the domain where translation is initiated. The protein belongs to the S3P family of ribosomal proteins. Studies of the mouse and rat proteins have demonstrated that the protein has an extraribosomal role as an endonuclease involved in the repair of UV-induced DNA damage. The protein appears to be located in both the cytoplasm and nucleus but not in the nucleolus. Higher levels of expression of this gene in colon adenocarcinomas and adenomatous polyps compared to adjacent normal colonic mucosa have been observed. This gene is co-transcribed with the small nucleolar RNA genes U15A and U15B, which are located in its first and fifth introns, respectively. As is typical for genes encoding ribosomal proteins, there are multiple processed pseudogenes of this gene dispersed through the genome. Multiple alternatively spliced transcript variants encoding different isoforms have been found for this gene.

Target:	40S Ribosomal Protein S3 (RPS3)
Clonality:	Polyclonal
Reactivity:	Human, Mouse, Rat
Tested Applications:	WB, IF/ICC
Host:	Rabbit
Recommended dilutions:	WB: 1/500 - 1/2000, IF/ICC: 1/50 - 1/200. Optimal dilutions/concentrations should be determined by the end user.
Conjugation:	Unconjugated
Immunogen:	Recombinant fusion protein corresponding to human RPS3
Isotype:	IgG
Form:	Liquid
Purification:	Purified by affinity chromatography.
Storage:	Aliquot and store at -20°C. Avoid repeated freeze/thaw cycles.
UniProt Primary AC:	P23396 (UniProt , ExPASy)
Gene Symbol:	RPS3
GeneID:	6188
OMIM:	600454
NCBI Accession:	NP_000996.2

Datasheet

Version: 4.0.0

Revision date: 01 Oct 2025



HGNC: 10420

KEGG: hsa:6188

Ensembl: ENSG00000149273

String: [9606.ENSP00000278572](#)

Molecular Weight: Calculated MW: 26 kDa/28 kDa

Observed MW: 27 kDa

Buffer: PBS, pH 7.3, containing 0.02% sodium azide, 50% glycerol.

Concentration: 1 mg/ml

Note: THIS PRODUCT IS FOR RESEARCH USE ONLY. NOT FOR USE IN DIAGNOSTIC, THERAPEUTIC OR COSMETIC PROCEDURES. NOT FOR HUMAN OR ANIMAL CONSUMPTION.

For Reference Only