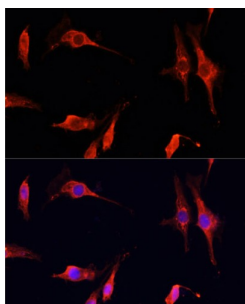
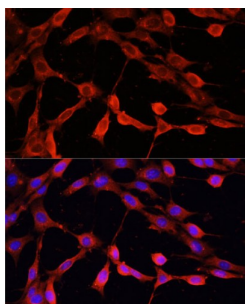


Deoxyribonuclease-1 (DNASE1) Antibody

Catalogue No.: abx001975



Immunofluorescence analysis of C6 cells using DNASE1 Antibody (1/100 dilution, 40x lens). Blue: DAPI for nuclear staining.



Immunofluorescence analysis of NIH-3T3 cells using DNASE1 Antibody (1/100 dilution, 40x lens). Blue: DAPI for nuclear staining.

DNASE1 Antibody is a Rabbit Polyclonal antibody against DNASE1. This gene encodes a member of the DNase family. This protein is stored in the zymogen granules of the nuclear envelope and functions by cleaving DNA in an endonucleolytic manner. At least six autosomal codominant alleles have been characterized, DNASE1*1 through DNASE1*6, and the sequence of DNASE1*2 represented in this record. Mutations in this gene have been associated with systemic lupus erythematosus (SLE), an autoimmune disease. A recombinant form of this protein is used to treat the one of the symptoms of cystic fibrosis by hydrolyzing the extracellular DNA in sputum and reducing its viscosity. Alternate transcriptional splice variants of this gene have been observed but have not been thoroughly characterized.

Target: Deoxyribonuclease-1 (DNASE1)

Clonality: Polyclonal

Reactivity: Mouse, Rat

Tested Applications: IF/ICC

Host: Rabbit

Recommended dilutions: IF/ICC: 1/50 - 1/200. Optimal dilutions/concentrations should be determined by the end user.

Conjugation: Unconjugated

Immunogen: Recombinant fusion protein corresponding to human DNASE1

Isotype: IgG

Datasheet

Version: 4.0.0

Revision date: 08 Jun 2025



Form:	Liquid
Purification:	Purified by affinity chromatography.
Storage:	Aliquot and store at -20°C. Avoid repeated freeze/thaw cycles.
UniProt Primary AC:	P24855 (UniProt , ExPASy)
Gene Symbol:	DNASE1
GeneID:	1773
NCBI Accession:	NP_005214.2
KEGG:	hsa:1773
String:	9606.ENSP00000385905
Buffer:	PBS, pH 7.3, containing 0.02% sodium azide, 50% glycerol.
Concentration:	1 mg/ml
Note:	THIS PRODUCT IS FOR RESEARCH USE ONLY. NOT FOR USE IN DIAGNOSTIC, THERAPEUTIC OR COSMETIC PROCEDURES. NOT FOR HUMAN OR ANIMAL CONSUMPTION.