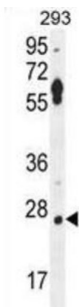
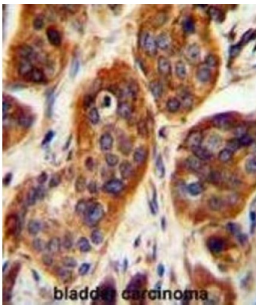
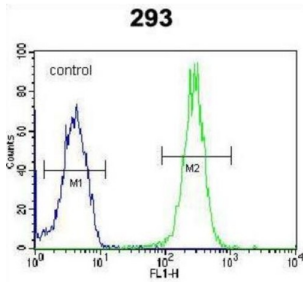


Leucine Rich Repeat Containing 57 (LRRC57) Antibody

Catalogue No.: abx025770



LRRC57 contains 7 LRR (leucine rich repeats). However, the exact function remains unknown.

Target: Leucine Rich Repeat Containing 57 (LRRC57)

Clonality: Polyclonal

Reactivity: Human

Tested Applications: ELISA, WB, IHC, FCM

Host: Rabbit

Recommended dilutions: WB: 1/1000, IHC-P: 1/50 - 1/100, FCM: 1/10 - 1/50. Not tested in IHC-F. Optimal dilutions/concentrations should be determined by the end user.

Conjugation: Unconjugated

Datasheet

Version: 4.0.0
Revision date: 10 Mar 2025



Immunogen:	KLH-conjugated synthetic peptide between 198-227 amino acids from the C-terminal region of human LRRC57.
Isotype:	IgG
Form:	Liquid
Purification:	Purified through a protein A column, followed by peptide affinity purification.
Storage:	Aliquot and store at -20°C. Avoid repeated freeze/thaw cycles.
UniProt Primary AC:	Q8N9N7 (UniProt , ExPASy)
Gene Symbol:	LRRC57
KEGG:	hsa:255252
String:	9606.ENSP00000326817
Molecular Weight:	Calculated MW: 26.8 kDa
Buffer:	PBS containing 0.09% sodium azide.
Specificity:	Predicted to react with Rat LRRC57.
Note:	THIS PRODUCT IS FOR RESEARCH USE ONLY. NOT FOR USE IN DIAGNOSTIC, THERAPEUTIC OR COSMETIC PROCEDURES. NOT FOR HUMAN OR ANIMAL CONSUMPTION.

For Reference Only