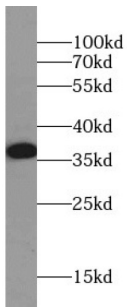
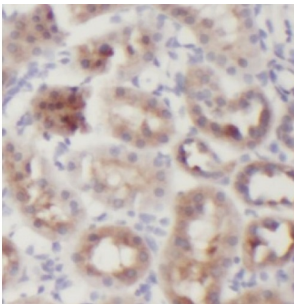


# Glyceraldehyde-3-Phosphate Dehydrogenase (GAPDH) Antibody

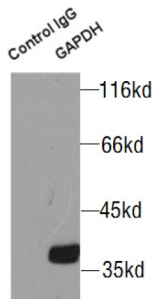
Catalogue No.: abx233343



WB analysis of HeLa cells, using GAPDH antibody (1/10000 dilution).



IHC-P analysis of human kidney tissue, using GAPDH Antibody (1/100 dilution).



IP analysis of HeLa cell lysate (3000 µg), using GAPDH antibody (4 µg, detection: 1/3000 dilution).

GAPDH Antibody is a Mouse Monoclonal against GAPDH.

**Target:** Glyceraldehyde-3-Phosphate Dehydrogenase (GAPDH)

**Clonality:** Monoclonal

**Reactivity:** Human, Mouse, Rat, Zebrafish

**Tested Applications:** ELISA, WB, IHC, IF/ICC, FCM, IP

**Host:** Mouse

**Recommended dilutions:** WB: 1/5000 - 1/20000, IHC: 1/50 - 1/500, IF/ICC: 1/20 - 1/200, IP: 1/3000 - 1/20000. Optimal dilutions/concentrations should be determined by the end user.

**Conjugation:** Unconjugated

# Datasheet

Version: 3.0.0  
Revision date: 05 Sep 2025



<b>Immunogen:</b>	glyceraldehyde-3-phosphate dehydrogenase
<b>Isotype:</b>	IgG <sub>1</sub>
<b>Form:</b>	Liquid
<b>Purity:</b>	≥ 95% (SDS-PAGE)
<b>Purification:</b>	Purified by Protein A and Protein G affinity chromatography.
<b>Storage:</b>	Aliquot and store at -20°C. Avoid repeated freeze/thaw cycles.
<b>Validity:</b>	12 months.
<b>UniProt Primary AC:</b>	P04406 ( <a href="#">UniProt</a> , <a href="#">ExpASY</a> )
<b>GeneID:</b>	<a href="#">2597</a>
<b>NCBI Accession:</b>	NP_001243728.1
<b>KEGG:</b>	hsa:2597
<b>String:</b>	<a href="#">9606.ENSP00000229239</a>
<b>Molecular Weight:</b>	Observed MW: 36 kDa
<b>Buffer:</b>	PBS, pH 7.3, with 0.02% sodium azide and 50% glycerol.
<b>Concentration:</b>	2 mg/ml
<b>Note:</b>	THIS PRODUCT IS FOR RESEARCH USE ONLY. NOT FOR USE IN DIAGNOSTIC, THERAPEUTIC OR COSMETIC PROCEDURES. NOT FOR HUMAN OR ANIMAL CONSUMPTION.