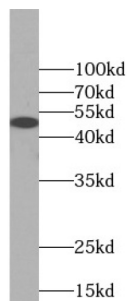
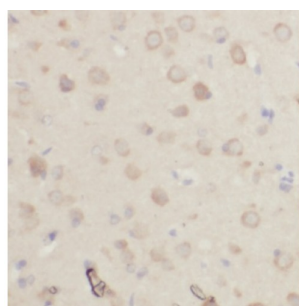


Solute Carrier Family 2, Facilitated Glucose Transporter Member 3 (SLC2A3) Antibody

Catalogue No.: abx233502



WB analysis of mouse brain tissue, using SLC2A3 antibody (1/600 dilution).



IHC-P analysis of human brain tissue, using SLC2A3 Antibody (1/50 dilution).

GLUT3 Antibody is a Rabbit Polyclonal against GLUT3.

Target: Solute Carrier Family 2, Facilitated Glucose Transporter Member 3 (SLC2A3)

Clonality: Polyclonal

Reactivity: Human, Mouse

Tested Applications: ELISA, WB, IHC

Host: Rabbit

Recommended dilutions: WB: 1/200 - 1/2000, IHC: 1/20 - 1/200. Optimal dilutions/concentrations should be determined by the end user.

Conjugation: Unconjugated

Immunogen: solute carrier family 2 (facilitated glucose transporter) , member 3

Isotype: IgG

Form: Liquid

Datasheet

Version: 3.0.0
Revision date: 02 Jun 2025



Purity:	≥ 95% (SDS-PAGE)
Purification:	Purified by immunogen affinity chromatography.
Storage:	Aliquot and store at -20°C. Avoid repeated freeze/thaw cycles.
Validity:	12 months.
UniProt Primary AC:	P11169 (UniProt , ExPASy)
Gene Symbol:	SLC2A3
KEGG:	hsa:6515
Ensembl:	ENSG00000059804
String:	9606.ENSP00000075120
Molecular Weight:	Observed MW: 50 kDa
Buffer:	PBS, pH 7.3, with 0.02% sodium azide and 50% glycerol.
Concentration:	2 mg/ml
Note:	THIS PRODUCT IS FOR RESEARCH USE ONLY. NOT FOR USE IN DIAGNOSTIC, THERAPEUTIC OR COSMETIC PROCEDURES. NOT FOR HUMAN OR ANIMAL CONSUMPTION.