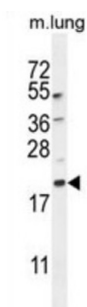
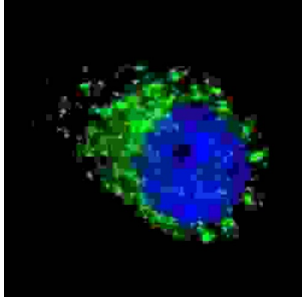


Microtubule-Associated Proteins 1A/1B Light Chain 3B (MAP1LC3A/B) Antibody

Catalogue No.: abx025820



The product of this gene is a subunit of neuronal microtubule-associated MAP1A and MAP1B proteins, which are involved in microtubule assembly and important for neurogenesis. Studies on the rat homolog implicate a role for this gene in autophagy, a process that involves the bulk degradation of cytoplasmic component.

Target: Microtubule-Associated Proteins 1A/1B Light Chain 3B (MAP1LC3A/B)

Clonality: Polyclonal

Reactivity: Human, Mouse

Tested Applications: ELISA, WB, IHC, IF/ICC

Host: Rabbit

Datasheet

Version: 3.0.0
Revision date: 29 Jun 2025



Recommended dilutions:	WB: 1/1000, IHC-P: 1/50 - 1/100, IF/ICC: 1/100. Not tested in IHC-F. Optimal dilutions/concentrations should be determined by the end user.
Conjugation:	Unconjugated
Immunogen:	KLH-conjugated synthetic peptide between 100-125 amino acids from human Cleaved-APG8a/b.
Isotype:	IgG
Form:	Liquid
Purification:	Purified through a protein A column, followed by peptide affinity purification.
Storage:	Aliquot and store at -20°C. Avoid repeated freeze/thaw cycles.
UniProt Primary AC:	Q9GZQ8 (UniProt , ExPASy)
String:	9606.ENSP00000268607
Molecular Weight:	Calculated MW: 14.7 kDa
Buffer:	PBS containing 0.09% sodium azide.
Specificity:	Predicted to react with Cow MAP1LC3B.
Note:	THIS PRODUCT IS FOR RESEARCH USE ONLY. NOT FOR USE IN DIAGNOSTIC, THERAPEUTIC OR COSMETIC PROCEDURES. NOT FOR HUMAN OR ANIMAL CONSUMPTION.