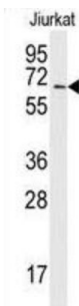
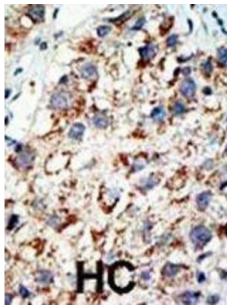


## SUMO-Activating Enzyme Subunit 2 (SAE2) Antibody

Catalogue No.: abx025828



Ubiquitin is covalently attached to target proteins by a multienzymatic system consisting of E1 (ubiquitin-activating), E2 (ubiquitin-conjugating), and E3 (ubiquitin-ligating) enzymes. NEDD8, a ubiquitin-like protein, is conjugated to proteins in a manner analogous to ubiquitinylation. beta-amyloid precursor protein-binding protein-1 (APPBP1) can bind to NEDD8 in rabbit reticulocyte lysates. However, since APPBP1 shows similarity to only the N-terminal domain of an E1 enzyme, it must interact with a protein showing similarity to the C-terminal region of E1s. By searching sequence databases, a cDNAs encoding UBA3 was identified as the human homolog of yeast Uba3. The predicted 442-amino acid UBA3 protein shares 43% sequence identity with yeast Uba3. In vitro, UBA3 formed a complex with APPBP1 and a thioester linkage with NEDD8. APPBP1/UBA3 complex may function as an E1-like enzyme for the activation of NEDD8.

**Target:** SUMO-Activating Enzyme Subunit 2 (SAE2)

**Clonality:** Polyclonal

**Reactivity:** Human

**Tested Applications:** ELISA, WB, IHC

**Host:** Rabbit

**Recommended dilutions:** WB: 1/1000, IHC-P: 1/50 - 1/100. Not tested in IHC-F. Optimal dilutions/concentrations should be determined by the end user.

**Conjugation:** Unconjugated

**Immunogen:** KLH-conjugated synthetic peptide between 601-631 amino acids from the C-terminal region of human SAE2 (UBA2).

# Datasheet

Version: 3.0.0  
Revision date: 12 Sep 2025



<b>Isotype:</b>	IgG
<b>Form:</b>	Liquid
<b>Purification:</b>	Purified through a protein G column, eluted with high and low pH buffers and neutralized immediately, followed by dialysis against PBS.
<b>Storage:</b>	Aliquot and store at -20°C. Avoid repeated freeze/thaw cycles.
<b>UniProt Primary AC:</b>	Q9UBT2 ( <a href="#">UniProt</a> , <a href="#">ExPASy</a> )
<b>String:</b>	<a href="#">9606.ENSP00000246548</a>
<b>Molecular Weight:</b>	Calculated MW: 71.2 kDa
<b>Buffer:</b>	PBS containing 0.09% sodium azide.
<b>Note:</b>	THIS PRODUCT IS FOR RESEARCH USE ONLY. NOT FOR USE IN DIAGNOSTIC, THERAPEUTIC OR COSMETIC PROCEDURES. NOT FOR HUMAN OR ANIMAL CONSUMPTION.

For Reference Only