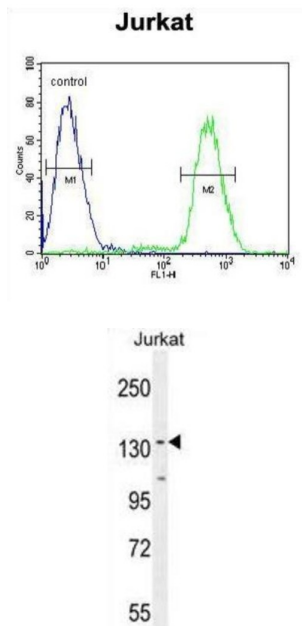


Protein Phosphatase 1 Regulatory Subunit 3A (PPP1R3A) Antibody

Catalogue No.: abx025841



The glycogen-associated form of protein phosphatase-1 (PP1) derived from skeletal muscle is a heterodimer composed of a 37-kD catalytic subunit and a 124-kD targeting and regulatory subunit. This gene encodes the regulatory subunit which binds to muscle glycogen with high affinity, thereby enhancing dephosphorylation of glycogen-bound substrates for PP1 such as glycogen synthase and glycogen phosphorylase kinase. [provided by RefSeq].

Target: Protein Phosphatase 1 Regulatory Subunit 3A (PPP1R3A)

Clonality: Polyclonal

Reactivity: Human

Tested Applications: ELISA, WB, FCM

Host: Rabbit

Recommended dilutions: WB: 1/1000, FCM: 1/10 - 1/50. Optimal dilutions/concentrations should be determined by the end user.

Conjugation: Unconjugated

Immunogen: KLH-conjugated synthetic peptide between 754-782 amino acids from the Central region of human PPP1R3A.

Isotype: IgG

Datasheet

Version: 4.0.0

Revision date: 02 Aug 2025



Form:	Liquid
Purification:	Purified through a protein A column, followed by peptide affinity purification.
Storage:	Aliquot and store at -20°C. Avoid repeated freeze/thaw cycles.
UniProt Primary AC:	Q16821 (UniProt , ExPASy)
KEGG:	hsa:5506
String:	9606.ENSP00000284601
Molecular Weight:	Calculated MW: 126 kDa
Buffer:	PBS containing 0.09% sodium azide.
Specificity:	Predicted to react with Rabbit PPP1R3A.
Note:	THIS PRODUCT IS FOR RESEARCH USE ONLY. NOT FOR USE IN DIAGNOSTIC, THERAPEUTIC OR COSMETIC PROCEDURES. NOT FOR HUMAN OR ANIMAL CONSUMPTION.

For Reference Only