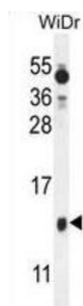
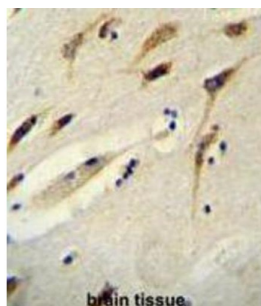
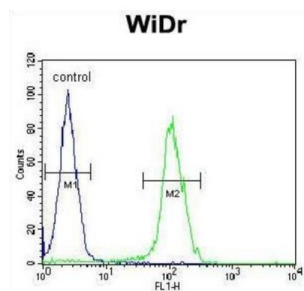


Protein BEX1 (BEX1) Antibody

Catalogue No.: abx025859



Signaling adapter molecule involved in p75NTR/NGFR signaling. Plays a role in cell cycle progression and neuronal differentiation. Inhibits neuronal differentiation in response to nerve growth factor (NGF). May act as a link between the cell cycle and neurotrophic factor signaling, possibly by functioning as an upstream modulator of receptor signaling, coordinating biological responses to external signals with internal cellular states (By similarity).

Target: Protein BEX1 (BEX1)

Clonality: Polyclonal

Reactivity: Human

Tested Applications: ELISA, IHC, FCM

Host: Rabbit

Recommended dilutions: IHC-P: 1/50 - 1/100, FCM: 1/10 - 1/50. Not tested in IHC-F. Optimal dilutions/concentrations should be determined by the end user.

Datasheet

Version: 6.0.0
Revision date: 10 Aug 2025



Conjugation:	Unconjugated
Immunogen:	KLH-conjugated synthetic peptide between 63-90 amino acids from the Central region of human BEX1.
Isotype:	IgG
Form:	Liquid
Purification:	Purified through a protein A column, followed by peptide affinity purification.
Storage:	Aliquot and store at -20°C. Avoid repeated freeze/thaw cycles.
UniProt Primary AC:	Q9HBH7 (UniProt , ExPASy)
Gene Symbol:	BEX1
String:	9606.ENSP00000361813
Molecular Weight:	Calculated MW: 14.9 kDa
Buffer:	PBS containing 0.09% sodium azide.
Specificity:	Predicted to react with Monkey BEX1.
Note:	THIS PRODUCT IS FOR RESEARCH USE ONLY. NOT FOR USE IN DIAGNOSTIC, THERAPEUTIC OR COSMETIC PROCEDURES. NOT FOR HUMAN OR ANIMAL CONSUMPTION.