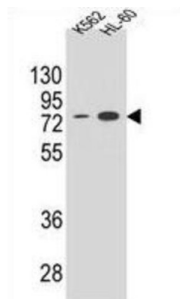
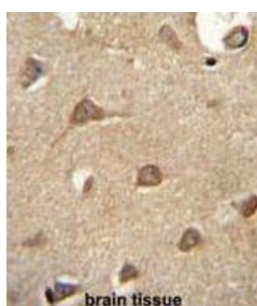


Ectonucleoside Triphosphate Diphosphohydrolase 3 (ENTPD3) Antibody

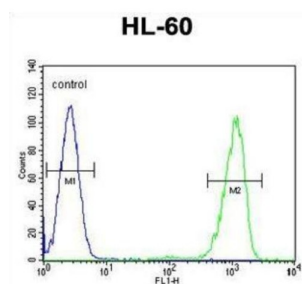
Catalogue No.: abx025868



WB analysis of K562 and HL-60 cell line lysates.



IHC-P analysis of human brain tissue, with DAB staining.



Flow cytometric analysis of HL-60 cells (right) compared to a negative control (left). FITC-conjugated goat anti-rabbit antibody was used as the secondary antibody.

ENTPD3 is similar to E-type nucleotidases (NTPases). NTPases, such as CD39, mediate catabolism of extracellular nucleotides. ENTPD3 contains 4 apyrase-conserved regions which is characteristic of NTPases.

Target: Ectonucleoside Triphosphate Diphosphohydrolase 3 (ENTPD3)

Clonality: Polyclonal

Reactivity: Human

Tested Applications: ELISA, WB, IHC, FCM

Host: Rabbit

Recommended dilutions: WB: 1/1000, IHC-P: 1/50 - 1/100, FCM: 1/10 - 1/50. Not tested in IHC-F. Optimal dilutions/concentrations should be determined by the end user.

Datasheet

Version: 3.0.0
Revision date: 26 Feb 2025



Conjugation:	Unconjugated
Immunogen:	KLH-conjugated synthetic peptide between 496-527 amino acids from the C-terminal region of human ENTPD3.
Isotype:	IgG
Form:	Liquid
Purification:	Purified through a protein A column, followed by peptide affinity purification.
Storage:	Aliquot and store at -20°C. Avoid repeated freeze/thaw cycles.
UniProt Primary AC:	O75355 (UniProt , ExPASy)
Gene Symbol:	ENTPD3
GeneID:	956
OMIM:	603161
NCBI Accession:	NP_001239.2
KEGG:	hsa:956
String:	9606.ENSP00000301825
Molecular Weight:	Calculated MW: 59.1 kDa
Buffer:	PBS containing 0.09% sodium azide.
Note:	THIS PRODUCT IS FOR RESEARCH USE ONLY. NOT FOR USE IN DIAGNOSTIC, THERAPEUTIC OR COSMETIC PROCEDURES. NOT FOR HUMAN OR ANIMAL CONSUMPTION.