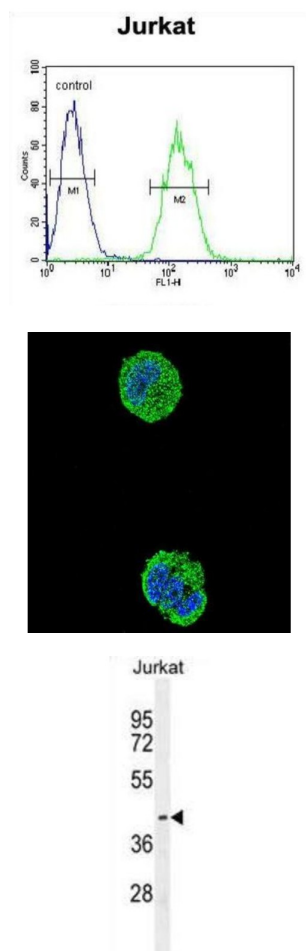


Protein C-Ets-1 (ETS1) Antibody

Catalogue No.: abx025870



ETS transcriptions factors, such as ETS1, regulate numerous genes and are involved in stem cell development, cell senescence and death, and tumorigenesis. The conserved ETS domain within these proteins is a winged helix-turn-helix DNA-binding domain that recognizes the core consensus DNA sequence GGAAT of target genes (summary by Dwyer et al., 2007 [PubMed 17986575]).

Target: Protein C-Ets-1 (ETS1)

Clonality: Polyclonal

Reactivity: Human

Tested Applications: ELISA, WB, IF/ICC, FCM

Host: Rabbit

Recommended dilutions: WB: 1/1000, IF/ICC: 1/10 - 1/50, FCM: 1/10 - 1/50. Optimal dilutions/concentrations should be determined by the end user.

Datasheet

Version: 2.0.0

Revision date: 12 Sep 2025



Conjugation:	Unconjugated
Immunogen:	KLH-conjugated synthetic peptide between 43-70 amino acids from the N-terminal region of human ETS1.
Isotype:	IgG
Form:	Liquid
Purification:	Purified through a protein A column, followed by peptide affinity purification.
Storage:	Aliquot and store at -20°C. Avoid repeated freeze/thaw cycles.
UniProt Primary AC:	P14921 (UniProt , ExPASy)
Molecular Weight:	Calculated MW: 50.4 kDa
Buffer:	PBS containing 0.09% sodium azide.
Specificity:	Predicted to react with Mouse and Rat ETS1.
Note:	THIS PRODUCT IS FOR RESEARCH USE ONLY. NOT FOR USE IN DIAGNOSTIC, THERAPEUTIC OR COSMETIC PROCEDURES. NOT FOR HUMAN OR ANIMAL CONSUMPTION.