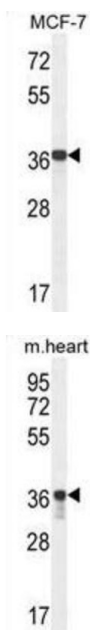
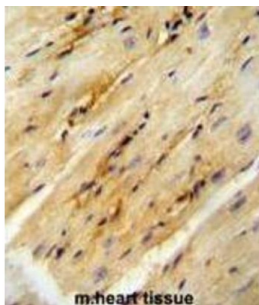


Glycerol-3-Phosphate Dehydrogenase 1 Like (GPD1L) Antibody

Catalogue No.: abx025872



The protein encoded by this gene catalyzes the conversion of sn-glycerol 3-phosphate to glycerone phosphate. The encoded protein is found in the cytoplasm, associated with the plasma membrane, where it binds the sodium channel, voltage-gated, type V, alpha subunit (SCN5A). Defects in this gene are a cause of Brugada syndrome type 2 (BRS2) as well as sudden infant death syndrome (SIDS).

Target: Glycerol-3-Phosphate Dehydrogenase 1 Like (GPD1L)

Clonality: Polyclonal

Reactivity: Human, Mouse

Tested Applications: ELISA, WB, IHC, FCM

Host: Rabbit

Recommended dilutions: WB: 1/2000, IHC-P: 1/50 - 1/100, FCM: 1/10 - 1/50. Not tested in IHC-F. Optimal dilutions/concentrations should be determined by the end user.

Datasheet

Version: 3.0.0
Revision date: 14 Jun 2025



Conjugation:	Unconjugated
Immunogen:	KLH-conjugated synthetic peptide between 44-73 amino acids from the N-terminal region of human GPD1L.
Isotype:	IgG
Form:	Liquid
Purification:	Purified through a protein A column, followed by peptide affinity purification.
Storage:	Aliquot and store at -20°C. Avoid repeated freeze/thaw cycles.
UniProt Primary AC:	Q8N335 (UniProt , ExPASy)
Gene Symbol:	GPD1L
KEGG:	hsa:23171
String:	9606.ENSP00000282541
Molecular Weight:	Calculated MW: 38.4 kDa
Buffer:	PBS containing 0.09% sodium azide.
Note:	THIS PRODUCT IS FOR RESEARCH USE ONLY. NOT FOR USE IN DIAGNOSTIC, THERAPEUTIC OR COSMETIC PROCEDURES. NOT FOR HUMAN OR ANIMAL CONSUMPTION.