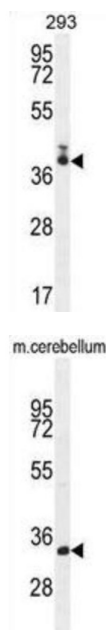
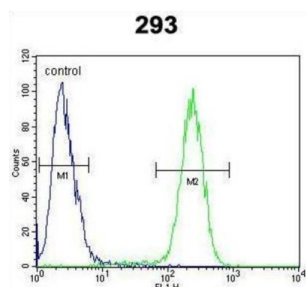


Transmembrane Protein 66 (TMEM66) Antibody

Catalogue No.: abx025886



TMEM66 is a multi-pass membrane protein which belongs to the TMEM66 family. The exact function of TMEM66 remains unknown.

Target: Transmembrane Protein 66 (TMEM66)

Clonality: Polyclonal

Reactivity: Human, Mouse

Tested Applications: ELISA, WB, FCM

Host: Rabbit

Recommended dilutions: WB: 1/1000, FCM: 1/10 - 1/50. Optimal dilutions/concentrations should be determined by the end user.

Datasheet

Version: 3.0.0
Revision date: 18 Mar 2025



Conjugation:	Unconjugated
Immunogen:	KLH-conjugated synthetic peptide between 33-62 amino acids from the N-terminal region of human TMEM66.
Isotype:	IgG
Form:	Liquid
Purification:	Purified through a protein A column, followed by peptide affinity purification.
Storage:	Aliquot and store at -20°C. Avoid repeated freeze/thaw cycles.
UniProt Primary AC:	Q96BY9 (UniProt , ExPASy)
KEGG:	hsa:51669
String:	9606.ENSP00000256255
Molecular Weight:	Calculated MW: 37 kDa
Buffer:	PBS containing 0.09% sodium azide.
Note:	THIS PRODUCT IS FOR RESEARCH USE ONLY. NOT FOR USE IN DIAGNOSTIC, THERAPEUTIC OR COSMETIC PROCEDURES. NOT FOR HUMAN OR ANIMAL CONSUMPTION.