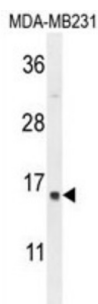


Small Proline-Rich Protein 2A (SPRR2A) Antibody

Catalogue No.: abx025892



Cross-linked envelope protein of keratinocytes. It is a keratinocyte protein that first appears in the cell cytosol, but ultimately becomes cross-linked to membrane proteins by transglutaminase. All that results in the formation of an insoluble envelope beneath the plasma membrane.

Target:	Small Proline-Rich Protein 2A (SPRR2A)
Clonality:	Polyclonal
Reactivity:	Human
Tested Applications:	ELISA, WB
Host:	Rabbit
Recommended dilutions:	WB: 1/1000. Optimal dilutions/concentrations should be determined by the end user.
Conjugation:	Unconjugated
Immunogen:	KLH-conjugated synthetic peptide between 48-72 amino acids from the C-terminal region of human SPRR2A.
Isotype:	IgG
Form:	Liquid
Purification:	Purified through a protein A column, followed by peptide affinity purification.
Storage:	Aliquot and store at -20°C. Avoid repeated freeze/thaw cycles.
UniProt Primary AC:	P35326 (UniProt , ExPASy)
Gene Symbol:	SPRR2A

Datasheet

Version: 3.0.0

Revision date: 09 Sep 2025



KEGG: hsa:6700

String: [9606.ENSP00000376423](#)

Molecular Weight: Calculated MW: 7.97 kDa

Buffer: PBS containing 0.09% sodium azide.

Note: THIS PRODUCT IS FOR RESEARCH USE ONLY. NOT FOR USE IN DIAGNOSTIC, THERAPEUTIC OR COSMETIC PROCEDURES. NOT FOR HUMAN OR ANIMAL CONSUMPTION.

For Reference Only